

Recombinant KAP1 Monoclonal Antibody

catalog number: **AN300993L**

Note: Centrifuge before opening to ensure complete recovery of vial contents.

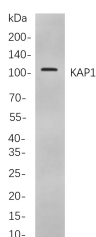
Description

Reactivity	Human;Mouse;Rat
Immunogen	Recombinant Human KAP1 protein
Host	Rabbit
Isotype	IgG, κ
Clone	B744
Purification	Protein A
Buffer	PBS, 50% glycerol, 0.05% Proclin 300, 0.05% protein protectant.

Applications

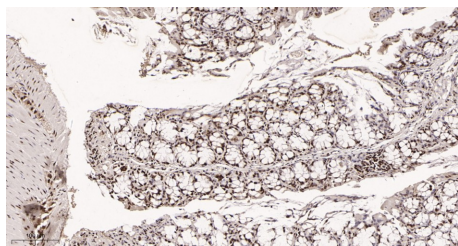
Applications	Recommended Dilution
IHC	1:200-1:1000
WB	1:1000-1:5000

Data

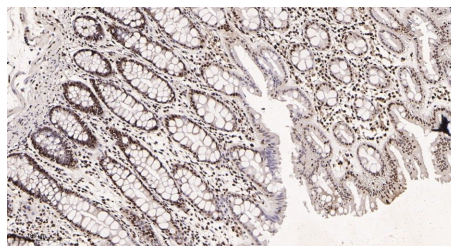


Western Blot with Recombinant KAP1 Monoclonal Antibody at dilution of 1:1000 dilution. Lane A: HEK293 cells.

Observed-MW:110 kDa
Calculated-MW:89 kDa



Immunohistochemistry of paraffin-embedded mouse colon tissue using Recombinant KAP1 Monoclonal Antibody at dilution of 1:200.



Immunohistochemistry of paraffin-embedded human colon tissue using Recombinant KAP1 Monoclonal Antibody at dilution of 1:200.

Preparation & Storage

Storage	Store at -20°C Valid for 12 months. Avoid freeze / thaw cycles.
Shipping	Ice bag

Background

The protein encoded by this gene mediates transcriptional control by interaction with the Kruppel-associated box repression domain found in many transcription factors. The protein localizes to the nucleus and is thought to associate with specific chromatin regions. The protein is a member of the tripartite motif family. This tripartite motif includes three zinc-binding domains, a RING, a B-box type 1 and a B-box type 2, and a coiled-coil region.

For Research Use Only

Toll-free: 1-888-852-8623
Web: www.elabscience.com

Tel: 1-832-243-6086
Email: techsupport@elabscience.com

Fax: 1-832-243-6017

Rev. V1.1