

Recombinant Mouse CD25/IL-2 R α Protein(Fc Tag)

Catalog Number: PDMM100166

Note: Centrifuge before opening to ensure complete recovery of vial contents.

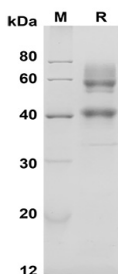
Description

Species	Mouse
Source	Mammalian-derived Mouse CD25/IL-2 R α proteins Glu22-Lys236, with an C-terminal Fc
Mol_Mass	48.5 kDa
Accession	P01590
Bio-activity	Not validated for activity

Properties

Purity	> 90% as determined by reducing SDS-PAGE.
Endotoxin	< 1.0 EU/mg of the protein as determined by the LAL method
Storage	Generally, lyophilized proteins are stable for up to 12 months when stored at -20 to -80 °C. Reconstituted protein solution can be stored at 4-8°C for 2-7 days. Aliquots of reconstituted samples are stable at < -20°C for 3 months.
Shipping	This product is provided as lyophilized powder which is shipped with ice packs.
Formulation	Lyophilized from a 0.2 μ m filtered solution in PBS with 5% Trehalose and 5% Mannitol.
Reconstitution	It is recommended that sterile water be added to the vial to prepare a stock solution of 0.5 mg/mL. Concentration is measured by UV-Vis.

Data



SDS-PAGE analysis of Mouse CD25/IL-2 R α proteins, 2 μ g/lane of Recombinant Mouse CD25/IL-2 R α proteins was resolved with SDS-PAGE under reducing conditions, showing bands at 55-60 KD

Background

For Research Use Only

Recombinant Mouse CD25/IL-2 R α Protein(Fc Tag)

Catalog Number: PDMM100166



CD25 (alpha-chain of the IL-2 receptor, or IL2RA), is a type I transmembrane glycoprotein with a signal peptide, an extracellular region, a transmembrane region, and a cytoplasmic domain. IL2RA is expressed on activated T cells and regulatory T cells and is capable of binding IL2 with low affinity by itself. However, a ligand-induced high-affinity heterotrimeric receptor complex is produced when IL2RA is associated non-covalently with the IL2 receptor beta and gamma chain, and subsequently initiates the intracellular signal pathways such as MAPK or JAK/STAT. On dendritic cells (DC), CD25 has been previously regarded as an activation marker, while both murine and human DC can express CD25, they do not express the beta-chain of the IL-2 receptor, which is indispensable for the execution of IL-2 signaling. The IL2RA (CD25) gene is a substantial component of the high-affinity receptor molecule highly expressed by activated T lymphocytes. Recently, a piece of strong evidence was obtained for the involvement of IL-2RA in conferring susceptibility to type 1 diabetes (T1D). Cancer growth and development are associated with the stimulation of the innate immune system, including enhanced interleukin 2 receptor (IL-2R) expression in immune cells and its shedding into the circulation in a soluble form of sIL-2Ralpha. In most hematological malignancies, including different types of leukemias and lymphomas, sIL-2Ralpha is released directly from the surface of neoplastic cells thus reflecting the tumor bulk, turnover, and activity. Several studies have proved that not only lymphoid cancer cells but also some non-lymphoid cancer cells, express IL-2R on their surface. They include malignant melanoma and carcinomas of the kidney, head and neck, esophagus, and lung. Thus, sIL-2Ralpha is elevated in most proliferative disturbances of the hematopoietic system and many solid tumors.

For Research Use Only

A Reliable Research Partner in Life Science and Medicine
Tel:400-999-2100

Email:techsupport@elabscience.cn

Web:www.elabscience.cn

Rev. V1.5