

**Note:** Centrifuge before opening to ensure complete recovery of vial contents.

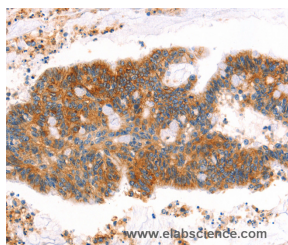
## Description

<b>Reactivity</b>	Human, Mouse, Rat
<b>Immunogen</b>	Synthetic peptide of human MLLT4
<b>Host</b>	Rabbit
<b>Isotype</b>	IgG
<b>Purification</b>	Affinity purification
<b>Conjugation</b>	Unconjugated
<b>Formulation</b>	PBS with 0.05% sodium azide and 50% glycerol, PH7.4

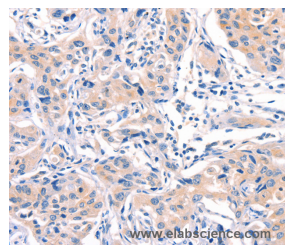
## Applications Recommended Dilution

<b>IHC</b>	1:50-1:200
------------	------------

## Data



Immunohistochemistry of paraffin-embedded Human colon cancer tissue using AFDN Polyclonal Antibody at dilution 1:40



Immunohistochemistry of paraffin-embedded Human lung cancer tissue using AFDN Polyclonal Antibody at dilution 1:40

## Preparation & Storage

**Storage** Store at -20°C. Avoid freeze / thaw cycles.

## Background

This gene encodes a multi-domain protein involved in signaling and organization of cell junctions during embryogenesis. It has also been identified as the fusion partner of acute lymphoblastic leukemia (ALL-1) gene, involved in acute myeloid leukemias with t(6;11)(q27;q23) translocation. Alternatively spliced transcript variants encoding different isoforms have been described for this gene, however, not all have been fully characterized.

## For Research Use Only

A Reliable Research Partner in Life Science and Medicine

Toll-free: 1-888-852-8623

Web: [www.elabscience.com](http://www.elabscience.com)

Tel: 1-832-243-6086

Email: [techsupport@elabscience.com](mailto:techsupport@elabscience.com)

Fax: 1-832-243-6017