

Recombinant Human IFN-λ3/IL-28B Protein (Human Cells, His Tag)

Catalog Number: PKSH032637

Note: Centrifuge before opening to ensure complete recovery of vial contents.

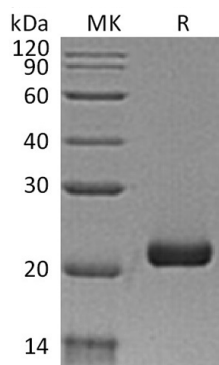
Description

Species	Human
Source	HEK293 Cells-derived Human IFN-λ3;IL-28B protein Val22-Val196, with an C-terminal His
Calculated MW	20.7 kDa
Observed MW	22 kDa
Accession	Q8IZI9
Bio-activity	Not validated for activity

Properties

Purity	> 95 % as determined by reducing SDS-PAGE.
Endotoxin	< 1.0 EU per µg of the protein as determined by the LAL method.
Storage	Generally, lyophilized proteins are stable for up to 12 months when stored at -20 to -80°C. Reconstituted protein solution can be stored at 4-8°C for 2-7 days. Aliquots of reconstituted samples are stable at < -20°C for 3 months.
Shipping	This product is provided as lyophilized powder which is shipped with ice packs.
Formulation	Lyophilized from a 0.2 µm filtered solution of 20mM PB, 150mM NaCl, 1mM EDTA, pH 7.4. Normally 5% - 8% trehalose, mannitol and 0.01% Tween 80 are added as protectants before lyophilization. Please refer to the specific buffer information in the printed manual.
Reconstitution	Please refer to the printed manual for detailed information.

Data



> 95 % as determined by reducing SDS-PAGE.

Background

Interleukin-28B; also known as Cytokine Zcyto22; Interferon lambda-3; Interferon lambda-4; IFNL3; IFNL4; ZCYTO22 and IL28B; is a secreted cytokine which belongs to the IL-28/IL-29 family. IL-28 has also been shown to play a role in the adaptive immune response. IL28B has immunomodulatory activity and up-regulates MHC class I antigen expression. IL28B displays potent antiviral activity and antitumor activity. In addition; IL28B is a ligand for the heterodimeric class II cytokine receptor composed of IL10RB and IL28RA. The ligand/receptor complex seems to signal through the Jak-STAT pathway.

For Research Use Only

Toll-free: 1-888-852-8623
Web: www.elabscience.com

Tel: 1-832-243-6086
Email: techsupport@elabscience.com

Fax: 1-832-243-6017