

## MIF Polyclonal Antibody

catalog number: **E-AB-40456**

**Note:** Centrifuge before opening to ensure complete recovery of vial contents.

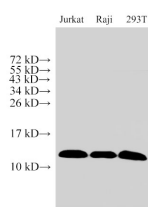
### Description

<b>Reactivity</b>	Human;Mouse;Rat
<b>Immunogen</b>	Recombinant Human Macrophage migration inhibitory factor protein
<b>Host</b>	Rabbit
<b>Isotype</b>	IgG
<b>Purification</b>	Antigen Affinity Purification
<b>Buffer</b>	PBS with 0.05% Proclin300, 1% protective protein and 50% glycerol, pH7.4

### Applications

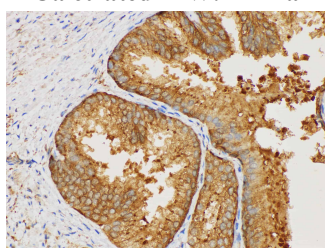
<b>WB</b>	1:500-1:2000
<b>IHC</b>	1:50-1:200

### Data

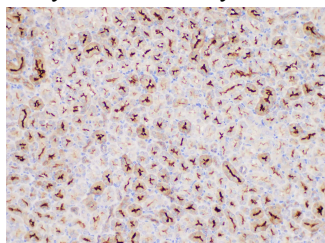


Western Blot analysis of Jurkat, Raji and 293T cells using MIF Polyclonal Antibody at dilution of 1:1000.

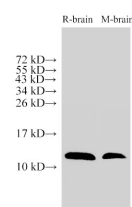
**Observed-MW:12 kDa**  
**Calculated-MW:12 kDa**



Immunohistochemistry of paraffin-embedded Human prostate using MIF Polyclonal Antibody at dilution of 1:50.

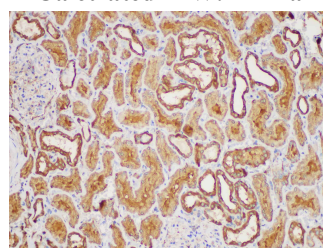


Immunohistochemistry of paraffin-embedded Mouse kidney using MIF Polyclonal Antibody at dilution of 1:50.

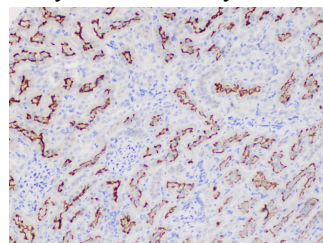


Western Blot analysis of Rat brain and Mouse brain using MIF Polyclonal Antibody at dilution of 1:500.

**Observed-MW:12 kDa**  
**Calculated-MW:12 kDa**



Immunohistochemistry of paraffin-embedded Human kidney using MIF Polyclonal Antibody at dilution of 1:50.



Immunohistochemistry of paraffin-embedded Rat kidney using MIF Polyclonal Antibody at dilution of 1:50.

### Preparation & Storage

**Storage** Store at -20°C Valid for 12 months. Avoid freeze / thaw cycles.

### For Research Use Only

Toll-free: 1-888-852-8623  
Web: [www.elabscience.com](http://www.elabscience.com)

Tel: 1-832-243-6086  
Email: [techsupport@elabscience.com](mailto:techsupport@elabscience.com)

Fax: 1-832-243-6017

Rev. V2.0

**Shipping**

The product is shipped with ice pack, upon receipt, store it immediately at the temperature recommended.

**Background**

This gene encodes a lymphokine involved in cell-mediated immunity, immunoregulation, and inflammation. It plays a role in the regulation of macrophage function in host defense through the suppression of anti-inflammatory effects of glucocorticoids. This lymphokine and the JAB1 protein form a complex in the cytosol near the peripheral plasma membrane, which may indicate an additional role in integrin signaling pathways.

**For Research Use Only**

Toll-free: 1-888-852-8623

Web: [www.elabscience.com](http://www.elabscience.com)

Tel: 1-832-243-6086

Email: [techsupport@elabscience.com](mailto:techsupport@elabscience.com)

Fax: 1-832-243-6017

Rev. V2.0