

ENO4 Polyclonal Antibody

catalog number: E-AB-17910

Note: Centrifuge before opening to ensure complete recovery of vial contents.

Description

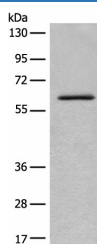
Reactivity	Human;Mouse
Immunogen	Synthetic peptide of human ENO4
Host	Rabbit
Isotype	IgG
Purification	Antigen affinity purification
Conjugation	Unconjugated
Buffer	Phosphate buffered solution, pH 7.4, containing 0.05% stabilizer and 50% glycerol.

Applications

Recommended Dilution

WB	1:500-1:2000
IHC	1:30-1:150

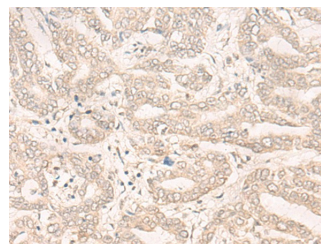
Data



Western blot analysis of Mouse lung tissue lysate using
ENO4 Polyclonal Antibody at dilution of 1:450

Observed-MW:Refer to figures

Calculated-MW:69 kDa



Immunohistochemistry of paraffin-embedded Human liver
cancer tissue using ENO4 Polyclonal Antibody at dilution of
1:30(×200)

Preparation & Storage

Storage	Store at -20°C Valid for 12 months. Avoid freeze / thaw cycles.
Shipping	The product is shipped with ice pack,upon receipt,store it immediately at the temperature recommended.

Background

May be required for sperm motility and function.