

ECM1 Polyclonal Antibody

catalog number: E-AB-19389

Note: Centrifuge before opening to ensure complete recovery of vial contents.

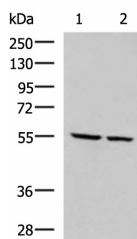
Description

Reactivity	Human
Immunogen	Synthetic peptide of human ECM1
Host	Rabbit
Isotype	IgG
Purification	Antigen affinity purification
Buffer	Phosphate buffered solution, pH 7.4, containing 0.05% stabilizer and 50% glycerol.

Applications

Applications	Recommended Dilution
WB	1:500-1:2000
IHC	1:25-1:50

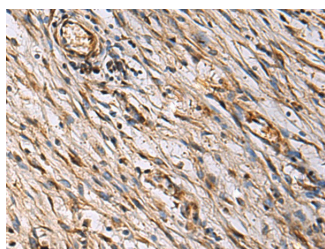
Data



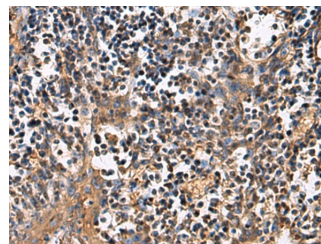
Western blot analysis of LOVO and LO2 cell lysates using ECM1 Polyclonal Antibody at dilution of 1:650

Observed-MW: Refer to figures

Calculated-MW: 61 kDa



Immunohistochemistry of paraffin-embedded Human colorectal cancer tissue using ECM1 Polyclonal Antibody at dilution of 1:25 (×200)



Immunohistochemistry of paraffin-embedded Human tonsil tissue using ECM1 Polyclonal Antibody at dilution of 1:25 (×200)

Preparation & Storage

Storage	Store at -20°C Valid for 12 months. Avoid freeze / thaw cycles.
Shipping	The product is shipped with ice pack, upon receipt, store it immediately at the temperature recommended.

Background

For Research Use Only

Extracellular matrix protein 1 (ECM1) is a glycoprotein involved in a number of biological processes such as bone formation, skin differentiation, cell proliferation, and promotes angiostasis. Pathologically, ECM1 contributes to the formation and metastasis of several types of cancer including breast, thyroid and hepatocellular cancers. (21128013) It inhibits MMP9 proteolytic activity.

For Research Use Only

Toll-free: 1-888-852-8623
Web: www.elabscience.com

Tel: 1-832-243-6086
Email: techsupport@elabscience.com

Fax: 1-832-243-6017

Rev. V1.7