

Recombinant SerpinF2 Monoclonal Antibody

catalog number: **AN300314P**

Note: Centrifuge before opening to ensure complete recovery of vial contents.

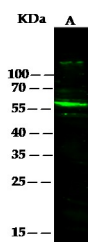
Description

Reactivity	Human
Immunogen	Recombinant Human SerpinF2 Protein
Host	Rabbit
Isotype	IgG
Clone	8D1
Purification	Protein A
Buffer	0.2 µm filtered solution in PBS

Applications

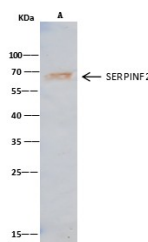
WB	1:500-1:1000
IP	1-2 µL/mg of lysate

Data



Western Blot with SERPINF2 Monoclonal Antibody at dilution of 1:500 dilution. Lane A: HepG2 Whole Cell Lysate, Lysates/proteins at 30 µg per lane.

Observed-MW:60 kDa
Calculated-MW:56 kDa



Immunoprecipitation analysis using 0.5 µL anti-SERPINF2 Monoclonal Antibody and 15 µL of 50 % Protein G agarose. Western blot was performed from the immunoprecipitate using SERPINF2 Monoclonal Antibody at a dilution of 1:1000. Lane A:0.5 mg HepG2 Whole Cell Lysate

Observed-MW:60 kDa
Calculated-MW:56 kDa

Preparation & Storage

Storage	This antibody can be stored at 2°C-8°C for one month without detectable loss of activity. Antibody products are stable for twelve months from date of receipt when stored at -20°C to -80°C. Preservative-Free. Avoid repeated freeze-thaw cycles.
Shipping	Ice bag

Background

This gene encodes a member of the serpin family of serine protease inhibitors. The protein is a major inhibitor of plasmin, which degrades fibrin and various other proteins. Consequently, the proper function of this gene has a major role in regulating the blood clotting pathway. Mutations in this gene result in alpha-2-plasmin inhibitor deficiency, which is characterized by severe hemorrhagic diathesis. Multiple transcript variants encoding different isoforms have been found for this gene.

For Research Use Only