

Recombinant Human Mucin-15/MUC15 Protein (His Tag)



Catalog Number:PKSH032766

Note: Centrifuge before opening to ensure complete recovery of vial contents.

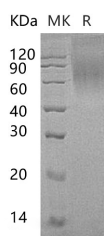
Description

Synonyms	Mucin-15;MUC-15;MUC15
Species	Human
Expression Host	HEK293 Cells
Sequence	Lys24-Thr 236
Accession	AAH58007.1
Calculated Molecular Weight	24.1 kDa
Observed molecular weight	74 kDa
Tag	C-His

Properties

Purity	> 90 % as determined by reducing SDS-PAGE.
Endotoxin	< 1.0 EU per µg of the protein as determined by the LAL method.
Storage	Generally, lyophilized proteins are stable for up to 12 months when stored at -20 to -80°C. Reconstituted protein solution can be stored at 4-8°C for 2-7 days. Aliquots of reconstituted samples are stable at < -20°C for 3 months.
Shipping	This product is provided as lyophilized powder which is shipped with ice packs.
Formulation	Lyophilized from a 0.2 µm filtered solution of 20mM PB,150mM NaCl,pH7.4. Normally 5 % - 8 % trehalose, mannitol and 0.01% Tween80 are added as protectants before lyophilization. Please refer to the specific buffer information in the printed manual
Reconstitution	Please refer to the printed manual for detailed information.

Data



> 90 % as determined by reducing SDS-PAGE.

Background

Mucin-15 is a single-pass type I membrane protein member of the Mucin family. Mucins are a family of high molecular weight, heavily glycosylated proteins (glycoconjugates) produced by epithelial tissues in most metazoans. A key characteristic of Mucins is their ability to form gels. Therefore they are a key component in most gel-like secretions, serving functions from lubrication to cell signalling to forming chemical barriers. Mucin-15 is expressed in many tissues. Mucin-15 is highly glycosylated (N- and O-linked carbohydrates). Mucin-15 may play a role in the cell adhesion to the extracellular matrix.

For Research Use Only

A Reliable Research Partner in Life Science and Medicine

Toll-free: 1-888-852-8623

Web: www.elabscience.com

Tel: 1-832-243-6086

Email: techsupport@elabscience.com

Fax: 1-832-243-6017