

CCAR1 Polyclonal Antibody

Catalog Number: E-AB-14953

Note: Centrifuge before opening to ensure complete recovery of vial contents.

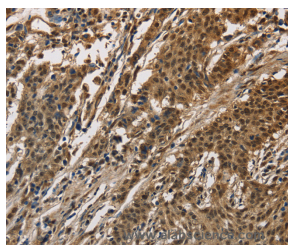
Description

Reactivity	Human, Mouse
Immunogen	Recombinant protein of human CCAR1
Host	Rabbit
Isotype	IgG
Purification	Affinity purification
Conjugation	Unconjugated
Formulation	PBS with 0.05% sodium azide and 50% glycerol, PH7.4

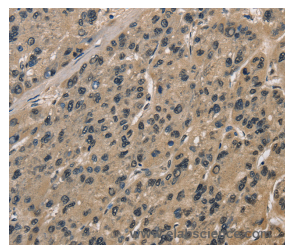
Applications Recommended Dilution

IHC	1:50-1:200
------------	------------

Data



Immunohistochemistry of paraffin-embedded Human gastric cancer tissue using CCAR1 Polyclonal Antibody at dilution 1:40



Immunohistochemistry of paraffin-embedded Human liver cancer tissue using CCAR1 Polyclonal Antibody at dilution 1:40

Preparation & Storage

Storage Store at -20°C. Avoid freeze / thaw cycles.

Background

Cell division cycle and apoptosis regulator protein 1 is a protein that in humans is encoded by the CCAR1 gene. The deduced 1,150-amino acid CARP1 protein contains a putative cold-shock protein domain expected to bind RNA and a putative DNA-binding motif predicted to be involved in chromosomal organization. Immunohistochemical analysis detected CARP1 in the perinuclear compartment of human breast cancer cells, and the protein had an apparent molecular mass of 130 kD by SDS-PAGE.

For Research Use Only

A Reliable Research Partner in Life Science and Medicine

Toll-free: 1-888-852-8623

Web: www.elabscience.com

Tel: 1-832-243-6086

Email: techsupport@elabscience.com

Fax: 1-832-243-6017