

Recombinant Human PSPH Protein (His Tag)

Catalog Number:PKSH032897



Note: Centrifuge before opening to ensure complete recovery of vial contents.

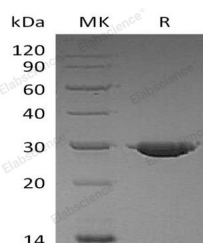
Description

Synonyms	Phosphoserine Phosphatase;PSP;PSPase;L-3-Phosphoserine Phosphatase;O-Phosphoserine Phosphohydrolase;PSPH
Species	Human
Expression Host	E.coli
Sequence	Met 1-Glu225
Accession	P78330
Calculated Molecular Weight	26.1 kDa
Observed molecular weight	25-30 kDa
Tag	C-His

Properties

Purity	> 95 % as determined by reducing SDS-PAGE.
Endotoxin	< 1.0 EU per µg of the protein as determined by the LAL method.
Storage	Store at < -20°C, stable for 6 months. Please minimize freeze-thaw cycles.
Shipping	This product is provided as liquid. It is shipped at frozen temperature with blue ice/gel packs. Upon receipt, store it immediately at < - 20°C.
Formulation	Supplied as a 0.2 µm filtered solution of 20mM Tris-HCl, 4M Urea, 5mM EDTA, pH 8.0.
Reconstitution	Not Applicable

Data



> 95 % as determined by reducing SDS-PAGE.

Background

Phosphoserine phosphatase (PSP) is an enzyme that belongs to the serB family. PSPH catalyzes magnesium-dependent hydrolysis of L-phosphoserine and is also involved in an exchange reaction between L-serine and L-phosphoserine. The reaction mechanism proceeds via the formation of a phosphoryl-enzyme intermediates. Deficiency of this protein is thought to be linked to Williams syndrome. A disorder that results in pre- and postnatal growth retardation; moderate psychomotor retardation and facial features suggestive of Williams syndrome.

For Research Use Only

A Reliable Research Partner in Life Science and Medicine

Toll-free: 1-888-852-8623

Web: www.elabscience.com

Tel: 1-832-243-6086

Email: techsupport@elabscience.com

Fax: 1-832-243-6017