

Recombinant Human Ube2H Protein (GST Tag)

Catalog Number: PKSH033316

Note: Centrifuge before opening to ensure complete recovery of vial contents.

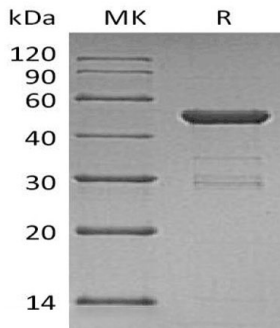
Description

Species	Human
Source	E.coli-derived Human Ube2H protein Met 1-Leu183, with an N-terminal GST
Calculated MW	47.0 kDa
Observed MW	50 kDa
Accession	P62256
Bio-activity	Not validated for activity

Properties

Purity	> 90 % as determined by reducing SDS-PAGE.
Concentration	Subject to label value.
Endotoxin	< 1.0 EU per µg of the protein as determined by the LAL method.
Storage	Store at < -20°C, stable for 6 months. Please minimize freeze-thaw cycles.
Shipping	This product is provided as liquid. It is shipped at frozen temperature with blue ice/gel packs. Upon receipt, store it immediately at < -20°C.
Formulation	Supplied as a 0.2 µm filtered solution of 50mM HEPES, 150mM NaCl, 2mM DTT, 10% Glycerol, pH 7.5.

Data



> 90 % as determined by reducing SDS-PAGE.

Background

Ubiquitin-Conjugating Enzyme E2 H (UBE2H) belongs to the E2 Ubiquitin-Conjugating Enzyme family. The modification of proteins with ubiquitin is an important cellular mechanism for targeting abnormal or short-lived proteins for degradation. Ubiquitination involves at least three classes of enzymes: ubiquitin-activating enzymes; or E1s; ubiquitin-conjugating enzymes; or E2s; and ubiquitin-protein ligases; or E3s. It has been shown to conjugate ubiquitin to histone H2A in an E3 dependent manner in vitro. UBE2H is the human homolog to the yeast DNA repair gene RAD6; which is induced by DNA damaging reagents. UBE2H has been associated with cancer-induced cachexia and with the regulation of sepsis-induced muscle proteolysis.

For Research Use Only

Toll-free: 1-888-852-8623
Web: www.elabscience.com

Tel: 1-832-243-6086
Email: techsupport@elabscience.com

Fax: 1-832-243-6017