

PE Anti-Human CD122/IL-2RB Antibody[TU27]

Catalog Number: E-AB-F1151D

Note: Centrifuge before opening to ensure complete recovery of vial contents.

Description

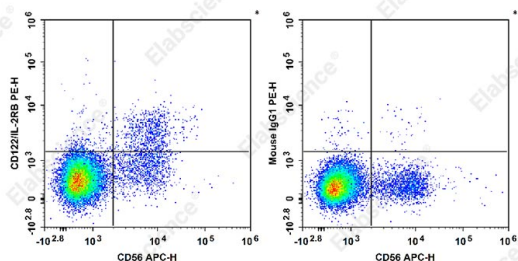
Reactivity	Human
Host	Mouse
Isotype	Mouse IgG1, κ
Clone No.	TU27
Isotype Control	PE Mouse IgG1, κ Isotype Control[MOPC-21] [Product E-AB-F09792D]
Conjugation	PE
Conjugation Information	PE is designed to be excited by the Blue (488 nm), Green (532 nm) and Yellow-Green (561 nm) lasers and detected using an optical filter centered near 575 nm (e.g., a 585/42 nm bandpass filter).
Storage Buffer	Phosphate buffered solution, pH 7.2, containing 0.09% stabilizer.

Applications

Recommended usage

FCM	Each lot of this antibody is quality control tested by flow cytometric analysis. The amount of the reagent is suggested to be used 5 μL of antibody per test (million cells in 100 μL staining volume or per 100 μL of whole blood). Please check your vial before the experiment. Since applications vary, the appropriate dilutions must be determined for individual use.
------------	---

Data



Human peripheral blood lymphocytes are stained with APC Anti-Human CD56 Antibody and PE Anti-Human CD122/IL-2RB Antibody[TU27] (Left). Lymphocytes are stained with APC Anti-Human CD56 Antibody and PE Mouse IgG1, κ Isotype Control (Right).

Preparation & Storage

Storage	Keep as concentrated solution. This product can be stored at 2-8°C for 24 months. Please protected from prolonged exposure to light and do not freeze.
Shipping	Ice bag

Antigen Information

Alternate Names	CD122;IL-2RB;IL-2Rβ;Interleukin-2 receptor subunit beta;p75
Uniprot ID	P14784

For Research Use Only

Gene ID

3560

Background

CD122 is a 70-75 kD type I transmembrane glycoprotein and member of the Ig superfamily. It is IL-2 receptor β chain also known as IL-2R β , which is also shared by the IL-15 receptor. CD122 is constitutively expressed by NK cells and at lower levels by a subset of T cells. Its expression is upregulated upon activation. The IL-2R β chain can combine with either the common γ subunit (γ_c , CD132) alone or with the γ_c subunit and the IL-2R α subunit (CD25) to generate intermediate or high affinity IL-2 receptor complexes, respectively. CD122 expression levels can be upregulated by activation.