

Recombinant CD8a/Lyt2 Monoclonal Antibody

catalog number: AN300002P

Note: Centrifuge before opening to ensure complete recovery of vial contents.

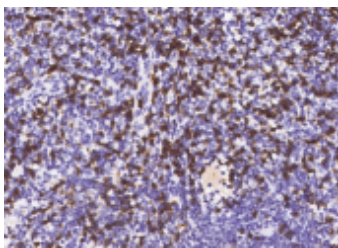
Description

Reactivity	Human; Ferret
Immunogen	Recombinant Human CD8a / Lyt2 protein
Host	Rabbit
Isotype	IgG
Clone	1A6
Purification	Protein A
Buffer	0.2 µm filtered solution in PBS

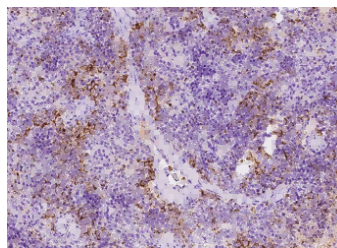
Applications Recommended Dilution

IHC-P	1:100-1:500
--------------	-------------

Data



Immunohistochemistry of paraffin-embedded human lymph node using CD8a / Lyt2 Monoclonal Antibody at dilution of 1:200.



Immunohistochemistry of paraffin-embedded Ferret spleen using CD8a / Lyt2 Monoclonal Antibody at dilution of 1:200.

Preparation & Storage

Storage	This antibody can be stored at 2°C-8°C for one month without detectable loss of activity. Antibody products are stable for twelve months from date of receipt when stored at -20°C to -80°C. Preservative-Free. Avoid repeated freeze-thaw cycles.
Shipping	Ice bag

Background

CD8 is a heterodimeric glycoprotein consisting of an alpha and beta chain. It is expressed on cytolytic T cells and functions in conjunction with the T cell receptor in the recognition of MHC/peptide complexes.

For Research Use Only