

## PE/Cyanine5 Anti-Mouse CD122 Antibody[TM-Beta 1]

Catalog Number: AN00418G

Note: Centrifuge before opening to ensure complete recovery of vial contents.

### Description

<b>Reactivity</b>	Mouse
<b>Host</b>	Rat
<b>Isotype</b>	Rat IgG2b, $\kappa$
<b>Clone No.</b>	TM-Beta 1
<b>Isotype Control</b>	PE/Cyanine5 Rat IgG2b, $\kappa$ Isotype Control[LTF-2] [Product E-AB-F09842G]
<b>Conjugation</b>	PE/Cyanine 5
<b>Conjugation Information</b>	PE/Cyanine5 is designed to be excited by the Blue (488 nm), Green (532 nm) and yellow-green (561 nm) lasers and detected using an optical filter centered near 670 nm (e.g., a 690/50 nm bandpass filter).
<b>Storage Buffer</b>	Phosphate buffered solution, pH 7.2, containing 0.09% sodium azide and 1% BSA.

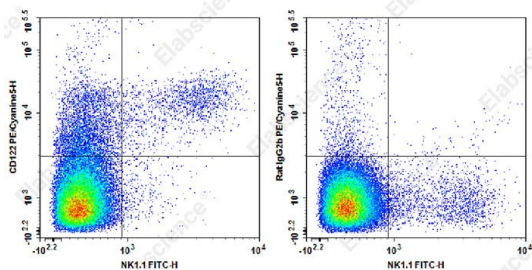
### Applications

FCM

### Recommended usage

Each lot of this antibody is quality control tested by flow cytometric analysis. The amount of the reagent is suggested to be used 5  $\mu$ L of antibody per test (million cells in 100  $\mu$ L staining volume or per 100  $\mu$ L of whole blood). Please check your vial before the experiment. Since applications vary, the appropriate dilutions must be determined for individual use.

### Data



Staining of C57BL/6 murine splenocytes cells with FITC Anti-Mouse NK1.1 Antibody and PE/Cyanine5 Anti-Mouse CD122 Antibody[TM-Beta 1] (left) or PE/Cyanine5 Rat IgG2b,  $\kappa$  Isotype Control (right). Total viable cells were used for analysis.

### Preparation & Storage

<b>Storage</b>	Keep as concentrated solution. This product can be stored at 2-8°C for 12 months. Please protected from prolonged exposure to light and do not freeze.
<b>Shipping</b>	Ice bag

### Antigen Information

<b>Alternate Names</b>	IL-2 Receptor $\beta$ chain;IL-2R $\beta$
<b>Uniprot ID</b>	P16297

### For Research Use Only

**Gene ID**

16185

**Background**

CD122 is a 70-75 kD IL-2 receptor  $\beta$  chain also known as IL-2R $\beta$ , which is also shared by the IL-15 receptor. It is constitutively expressed by NK cells and at lower levels by T cells, B cells, monocytes, and macrophages. The IL-2R $\beta$  chain can combine with either the common  $\gamma$  subunit ( $\gamma$ c, CD132) alone or with the  $\gamma$ c subunit and the IL-2R $\alpha$  subunit (CD25) to generate intermediate or high affinity IL-2 receptor complexes, respectively. CD122 expression levels can be upregulated by activation. The TM- $\beta$ 1 antibody does inhibit IL-2 binding to the IL-2 receptor. CD122 is expressed on murine, but not human, CD8+ Tregs involved in the maintenance of T cell homeostasis.