

APC Anti-Mouse CD206/MMR Antibody[C068C2]

Catalog Number: E-AB-F1135E

Note: Centrifuge before opening to ensure complete recovery of vial contents.

Description

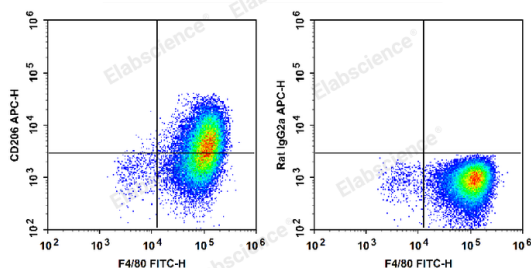
Reactivity	Mouse
Host	Rat
Isotype	Rat IgG2a, κ
Clone No.	C068C2
Isotype Control	APC Rat IgG2a, κ Isotype Control[2A3] [Product E-AB-F09832E]
Conjugation	APC
Conjugation Information	APC is designed to be excited by the Red (627-640 nm) laser and detected using an optical filter centered near 660 nm (e.g., a 660/20 nm bandpass filter).
Storage Buffer	Phosphate buffered solution, pH 7.2, containing 0.09% stabilizer.

Applications

Recommended usage

FCM Each lot of this antibody is quality control tested by flow cytometric analysis. **The amount of the reagent is suggested to be used 5 μ L of antibody per test (million cells in 100 μ L staining volume or per 100 μ L of whole blood).** Please check your vial before the experiment. Since applications vary, the appropriate dilutions must be determined for individual use.

Data



C57BL/6 murine abdominal macrophages elicited by starch broth are stained with FITC Anti-Mouse F4/80 Antibody and APC Anti-Mouse CD206 Antibody (Left). Abdominal macrophages are stained with FITC Anti-Mouse F4/80 Antibody and APC Rat IgG2a, κ Isotype Control (Right).

Preparation & Storage

Storage	Keep as concentrated solution. This product can be stored at 2-8°C for 24 months. Please protected from prolonged exposure to light and do not freeze.
Shipping	Ice bag

Antigen Information

Alternate Names	MMR;MR;MRC1;macrophage mannose receptor;mannose receptor
Uniprot ID	Q61830
Gene ID	17533

For Research Use Only

Background

CD206, also known as mannose receptor (MR), is a 175 kD type I membrane protein. It is a pattern recognition receptor (PRR) belonging to the C-type lectin superfamily. MR is expressed on macrophages, dendritic cells, Langerhans cells, and hepatic or lymphatic endothelial cells. MR recognizes a range of microbial carbohydrates bearing mannose, fucose, or N-acetyl glucosamine through its C-type lectin-like carbohydrate recognition domains, sulfated carbohydrate antigens through its cysteine-rich domain, and collagens through its fibronectin type II domain. MR mediates endocytosis and phagocytosis as well as activation of macrophages and antigen presentation. It plays an important role in host defense and provides a link between innate and adaptive immunity. Recently, MR on lymphatic endothelial cells was found to be involved in leukocyte trafficking and a contributor to the metastatic behavior of cancer cells. It suggests that MR may be a potential target in controlling inflammation and cancer metastasis by targeting the lymphatic vasculature.