

## THOC7 Polyclonal Antibody

**catalog number: E-AB-14720**

**Note:** Centrifuge before opening to ensure complete recovery of vial contents.

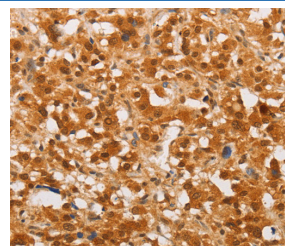
### Description

<b>Reactivity</b>	Human;Mouse
<b>Immunogen</b>	Recombinant protein of human THOC7
<b>Host</b>	Rabbit
<b>Isotype</b>	IgG
<b>Purification</b>	Affinity purification
<b>Buffer</b>	Phosphate buffered solution, pH 7.4, containing 0.05% stabilizer and 50% glycerol.

### Applications

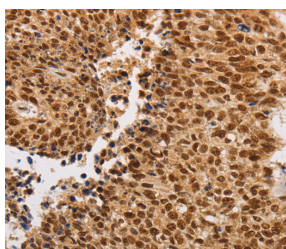
Applications	Recommended Dilution
<b>WB</b>	1:500-1:2000
<b>IHC</b>	1:50-1:200

### Data



Western Blot analysis of Mouse spleen and Human fetal liver Immunohistochemistry of paraffin-embedded Human thyroid tissue, Hela cell and Human fetal brain tissue using THOC7 Polyclonal Antibody at dilution of 1:30  
Polyclonal Antibody at dilution of 1:450

**Calculated-MW:24 kDa**



Immunohistochemistry of paraffin-embedded Human lung cancer using THOC7 Polyclonal Antibody at dilution of 1:30

### Preparation & Storage

<b>Storage</b>	Store at -20°C Valid for 12 months. Avoid freeze / thaw cycles.
<b>Shipping</b>	The product is shipped with ice pack, upon receipt, store it immediately at the temperature recommended.

### Background

### For Research Use Only

NIF3L1 BP1 (Ngg1-interacting factor 3-like 1 binding protein 1), also known as THOC7 (THO complex subunit 7 homolog), fSAP24 or hTREX30, is a 204 amino acid cytoplasmic and nuclear protein that belongs to the THOC7 family and interacts with NIF3L1. NIF3L1 BP1 is a component of the THO/TREX complex that is recruited to transcribed genes and travels along with RNA polymerase II (Pol II) during elongation, coupling Pol II with RNA splicing and export factors. The THO/TREX complex also plays a role in the export of Kaposi's sarcoma-associated herpesvirus (KSHV) intronless mRNAs and infectious virus production. The gene that encodes NIF3L1 BP1 maps to human chromosome 3p14.1.

## For Research Use Only

Toll-free: 1-888-852-8623  
Web: [www.elabscience.com](http://www.elabscience.com)

Tel: 1-832-243-6086  
Email: [techsupport@elabscience.com](mailto:techsupport@elabscience.com)

Fax: 1-832-243-6017

Rev. V1.7