

## A2ML1 Polyclonal Antibody

**catalog number: E-AB-91925**

**Note:** Centrifuge before opening to ensure complete recovery of vial contents.

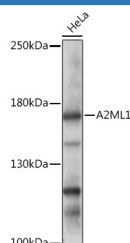
### Description

<b>Reactivity</b>	Human; Rat
<b>Immunogen</b>	A synthetic peptide of human A2ML1
<b>Host</b>	Rabbit
<b>Isotype</b>	IgG
<b>Purification</b>	Affinity purification
<b>Buffer</b>	Phosphate buffered solution, pH 7.4, containing 0.05% stabilizer and 50% glycerol.

### Applications Recommended Dilution

<b>WB</b>	1:500-1:2000
-----------	--------------

### Data



Western blot analysis of extracts of HeLa cells using A2ML1 Polyclonal Antibody at 1:1000 dilution.

**Observed-MW: 161 kDa**

### Preparation & Storage

<b>Storage</b>	Store at -20°C Valid for 12 months. Avoid freeze / thaw cycles.
<b>Shipping</b>	The product is shipped with ice pack, upon receipt, store it immediately at the temperature recommended.

### Background

This gene encodes a member of the alpha-macroglobulin superfamily. The encoded protein is thought to be an N-glycosylated monomeric protein that acts as an inhibitor of several proteases. It has been shown to form covalent interactions with proteases, and has been reported as the p170 antigen recognized by autoantibodies in the autoimmune disease paraneoplastic pemphigus (PNP; PMID:20805888). Mutations in these gene have also been associated with some cases of Noonan syndrome (NS; PMID:24939586) as well as some cases of otitis media (PMID:26121085). Alternative splicing results in multiple transcript variants encoding different isoforms. [provided by RefSeq, Aug 2015]

### For Research Use Only