

Recombinant Human FKBP2 Protein (His Tag)

Catalog Number: PKSH032875

Note: Centrifuge before opening to ensure complete recovery of vial contents.

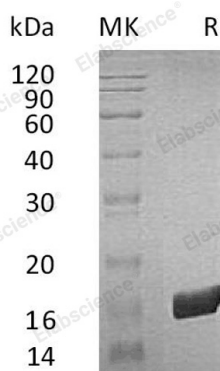
Description

Species	Human
Source	HEK293 Cells-derived Human FKBP2 protein Ala22-Leu142, with an C-terminal His
Calculated MW	14.3 kDa
Observed MW	17 kDa
Accession	P26885
Bio-activity	Not validated for activity

Properties

Purity	> 95 % as determined by reducing SDS-PAGE.
Concentration	Subject to label value.
Endotoxin	< 1.0 EU per µg of the protein as determined by the LAL method.
Storage	Store at < -20°C, stable for 6 months. Please minimize freeze-thaw cycles.
Shipping	This product is provided as liquid. It is shipped at frozen temperature with blue ice/ gel packs. Upon receipt, store it immediately at < - 20°C.
Formulation	Supplied as a 0.2 µm filtered solution of 20mM Tris-HCl, 150mM NaCl, pH 7.5.

Data



> 95 % as determined by reducing SDS-PAGE.

Background

Peptidyl-prolyl cis-trans isomerase FKBP2(FKBP2 for short), also named 13 kDa FK506-binding protein, FK506-binding protein 2, Immunophilin FKBP13, Rotamase, is a endoplasmic reticulum peripheral membrane protein. It contains 1 PPlase FKBP-type domain and belongs to the FKBP-type PPlase family, FKBP2 subfamily which takes part in immunoregulation and basic cellular processes involving protein folding and trafficking. FKBP2 is a cis-trans prolyl isomerase that binds the immunosuppressants FK506 and rapamycin. FKBP2 functions as an ER chaperone and as a component of membrane cytoskeletal scaffolds.

For Research Use Only

Toll-free: 1-888-852-8623
Web: www.elabscience.com

Tel: 1-832-243-6086
Email: techsupport@elabscience.com

Fax: 1-832-243-6017