

C1R Polyclonal Antibody

catalog number: E-AB-18567

Note: Centrifuge before opening to ensure complete recovery of vial contents.

Description

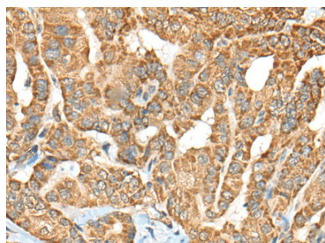
Reactivity	Human
Immunogen	Fusion protein of human C1R
Host	Rabbit
Isotype	IgG
Purification	Antigen affinity purification
Conjugation	Unconjugated
buffer	Phosphate buffered solution, pH 7.4, containing 0.05% stabilizer and 50% glycerol.

Applications

Recommended Dilution

IHC	1:50-1:300
------------	------------

Data



Immunohistochemistry of paraffin-embedded Human thyroid cancer tissue using C1R Polyclonal Antibody at dilution of 1:70($\times 200$)

Preparation & Storage

Storage	Store at -20°C Valid for 12 months. Avoid freeze / thaw cycles.
Shipping	The product is shipped with ice pack, upon receipt, store it immediately at the temperature recommended.

Background

C1R (Complement C1r) is a Protein Coding gene. Diseases associated with C1R include Ehlers-Danlos Syndrome, Periodontal Type, 1 and Periodontal Ehlers-Danlos Syndrome. Among its related pathways are Creation of C4 and C2 activators and Complement and coagulation cascades. Gene Ontology (GO) annotations related to this gene include calcium ion binding and serine-type peptidase activity. An important paralog of this gene is MASP2.

For Research Use Only