

## Recombinant Human NECAP2 Protein (His Tag)

**Catalog Number:** PKSH032045

**Note:** Centrifuge before opening to ensure complete recovery of vial contents.

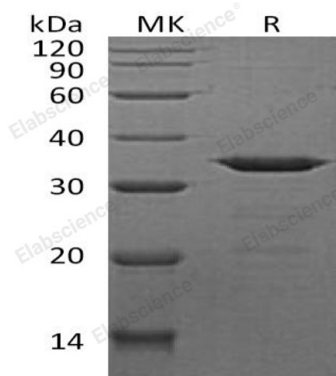
### Description

<b>Species</b>	Human
<b>Source</b>	E.coli-derived Human NECAP2 protein Met 1-Phe263, with an N-terminal His & C-terminal His
<b>Calculated MW</b>	31.5 kDa
<b>Observed MW</b>	35 kDa
<b>Accession</b>	Q9NVZ3
<b>Bio-activity</b>	Not validated for activity

### Properties

<b>Purity</b>	> 95 % as determined by reducing SDS-PAGE.
<b>Concentration</b>	Subject to label value.
<b>Endotoxin</b>	< 1.0 EU per µg of the protein as determined by the LAL method.
<b>Storage</b>	Store at < -20°C, stable for 6 months. Please minimize freeze-thaw cycles.
<b>Shipping</b>	This product is provided as liquid. It is shipped at frozen temperature with blue ice/ gel packs. Upon receipt, store it immediately at < - 20°C.
<b>Formulation</b>	Supplied as a 0.2 µm filtered solution of PBS, 2mM EDTA, 1mM DTT, pH 7.4.

### Data



> 95 % as determined by reducing SDS-PAGE.

### Background

NECAP2 belongs to the NECAP family. The WXXF motifs mediate binding of accessory proteins to the ear-domain of AP-1, GGAs and AP-2 through hydrophobic interactions. Adaptin ear-binding coat-associated protein 2 can interact with AP1G1 and AP2A1 components of the adapter protein complex AP-1 and AP-2. It also interacts with the GAE domain proteins GGA1, GGA2 and GGA3.

### For Research Use Only