

Recombinant NR1D1 Monoclonal Antibody

catalog number: E-AB-81587

Note: Centrifuge before opening to ensure complete recovery of vial contents.

Description

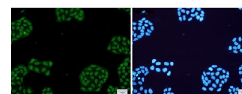
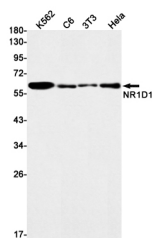
Reactivity	Human;Mouse;Rat
Immunogen	A synthetic peptide of human NR1D1
Host	Rabbit
Isotype	IgG
Clone	R05-8B1
Purification	Affinity Purified
Buffer	50mM Tris-Glycine(pH 7.4), 0.15M NaCl, 40% Glycerol, 0.05% stabilizer and 0.05% protective protein.

Applications

Recommended Dilution

WB	1:500-1:1000
IF	1:20-1:100

Data



Western blot detection of NR1D1 in K562,C6,3T3,HeLa cell lysates using NR1D1 Rabbit mAb(1:1000 diluted).Predicted band size:67kDa.Observed band size:67kDa.

Immunofluorescence of NR1D1(green) in HeLa cells using NR1D1 Rabbit mAb at dilution 1:50, and DAPI(blue)

Observed-MW:67 kDa

Calculated-MW:67 kDa

Preparation & Storage

Storage	Store at -20°C Valid for 12 months. Avoid freeze / thaw cycles.
Shipping	The product is shipped with ice pack,upon receipt,store it immediately at the temperature recommended.

Background

This gene encodes a transcription factor that is a member of the nuclear receptor subfamily 1. The encoded protein is a ligand-sensitive transcription factor that negatively regulates the expression of core clock proteins. In particular this protein represses the circadian clock transcription factor aryl hydrocarbon receptor nuclear translocator-like protein 1 (ARNTL). This protein may also be involved in regulating genes that function in metabolic, inflammatory and cardiovascular processes.

For Research Use Only