

# PPBP Polyclonal Antibody

Catalog Number: E-AB-19288



**Note:** Centrifuge before opening to ensure complete recovery of vial contents.

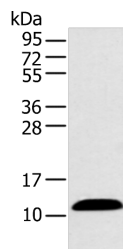
## Description

<b>Reactivity</b>	Human
<b>Immunogen</b>	Synthetic peptide of human PPBP
<b>Host</b>	Rabbit
<b>Isotype</b>	IgG
<b>Purification</b>	Antigen affinity purification
<b>Conjugation</b>	Unconjugated
<b>Formulation</b>	PBS with 0.05% NaN <sub>3</sub> and 40% Glycerol, pH7.4

## Applications Recommended Dilution

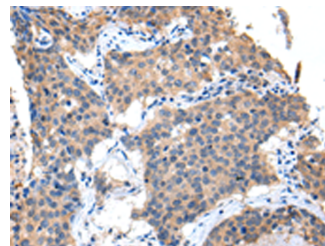
<b>WB</b>	1:1000-1:5000
<b>IHC</b>	1:25-1:100
<b>ELISA</b>	1:2000-1:10000

## Data

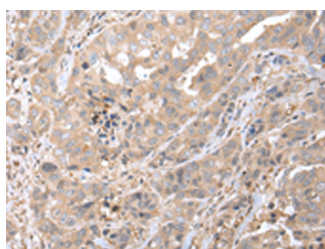


Western blot analysis of Human plasma solution using PPBP Polyclonal Antibody at dilution of 1:500

**Observed MW: Refer to figures**  
**Calculated Mw: 14 kDa**



Immunohistochemistry of paraffin-embedded Human lung cancer tissue using PPBP Polyclonal Antibody at dilution of 1:35 (×200)



Immunohistochemistry of paraffin-embedded Human breast cancer tissue using PPBP Polyclonal Antibody at dilution of 1:35 (×200)

## Preparation & Storage

**Storage** Store at -20°C. Avoid freeze / thaw cycles.

## Background

PPBP (Pro-Platelet Basic Protein) is a Protein Coding gene. Diseases associated with PPBP include Erythromelalgia and

## For Research Use Only

A Reliable Research Partner in Life Science and Medicine

Toll-free: 1-888-852-8623

Web: [www.elabscience.com](http://www.elabscience.com)

Tel: 1-832-243-6086

Email: [techsupport@elabscience.com](mailto:techsupport@elabscience.com)

Fax: 1-832-243-6017

# PPBP Polyclonal Antibody

Catalog Number: E-AB-19288



Colloid Adenoma. Among its related pathways are GPCR Pathway and Peptide ligand-binding receptors. GO annotations related to this gene include growth factor activity and glucose transmembrane transporter activity. An important paralog of this gene is CXCL1. The protein encoded by this gene is a platelet-derived growth factor that belongs to the CXC chemokine family. This growth factor is a potent chemoattractant and activator of neutrophils. It has been shown to stimulate various cellular processes including DNA synthesis, mitosis, glycolysis, intracellular cAMP accumulation, prostaglandin E2 secretion, and synthesis of hyaluronic acid and sulfated glycosaminoglycan. It also stimulates the formation and secretion of plasminogen activator by synovial cells. The protein also is an antimicrobial protein with bactericidal and antifungal activity.

---

## For Research Use Only

A Reliable Research Partner in Life Science and Medicine

Toll-free: 1-888-852-8623

Web: [www.elabscience.com](http://www.elabscience.com)

Tel: 1-832-243-6086

Email: [techsupport@elabscience.com](mailto:techsupport@elabscience.com)

Fax: 1-832-243-6017