

YRDC Polyclonal Antibody

catalog number: E-AB-19369

Note: Centrifuge before opening to ensure complete recovery of vial contents.

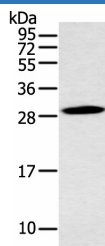
Description

Reactivity	Human;Mouse;Rat
Immunogen	Synthetic peptide of human YRDC
Host	Rabbit
Isotype	IgG
Purification	Antigen affinity purification
Buffer	Phosphate buffered solution, pH 7.4, containing 0.05% stabilizer and 50% glycerol.

Applications

Applications	Recommended Dilution
WB	1:500-1:2000
IHC	1:25-1:100

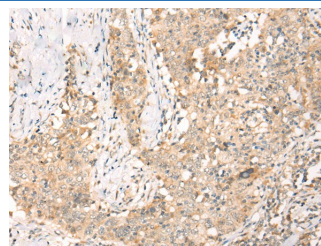
Data



Western blot analysis of Mouse stomach tissue using YRDC Polyclonal Antibody at dilution of 1:400

Observed-MW:Refer to figures

Calculated-MW:29 kDa



Immunohistochemistry of paraffin-embedded Human esophagus cancer tissue using YRDC Polyclonal Antibody at dilution of 1:30(×200)

Preparation & Storage

Storage	Store at -20°C Valid for 12 months. Avoid freeze / thaw cycles.
Shipping	The product is shipped with ice pack, upon receipt, store it immediately at the temperature recommended.

Background

YrdC (yrdC domain containing protein), also known as IRIP (ischemia/reperfusion-inducible protein homolog), SUA5 or DRIP3 (dopamine receptor-interacting protein 3), is a 279 amino acid ubiquitously expressed protein found at highest levels in brain, liver and pancreas. A member of the SUA5 family, yrdC is involved in certain aspects of transporter activity, such as the regulation of efflux transporter activity and cargo assembly. YrdC is a peripheral membrane protein that contains one yrdC-like domain, interacts with RSC1A1 and localizes to mitochondrial and plasma membranes.

For Research Use Only