

Recombinant Human UBE2M/UBC12 Protein

Catalog Number: PKSH030703

Note: *Centrifuge before opening to ensure complete recovery of vial contents.*

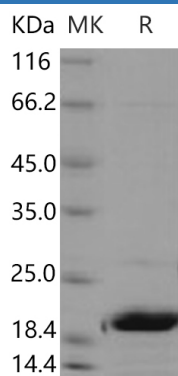
Description

| | |
|----------------------|--------------------------------------------------------|
| Species | Human |
| Source | E.coli-derived Human UBE2M/UBC12 protein Met 1-Lys 183 |
| Calculated MW | 21 kDa |
| Observed MW | 20 kDa |
| Accession | P61081 |
| Bio-activity | Not validated for activity |

Properties

| | |
|-----------------------|---------------------------------------------------------------------------------------------------------------------------------------------------------------------------------------------------------------------------------------|
| Purity | > 90 % as determined by reducing SDS-PAGE. |
| Endotoxin | Please contact us for more information. |
| Storage | Generally, lyophilized proteins are stable for up to 12 months when stored at -20 to -80°C. Reconstituted protein solution can be stored at 4-8°C for 2-7 days. Aliquots of reconstituted samples are stable at < -20°C for 3 months. |
| Shipping | This product is provided as lyophilized powder which is shipped with ice packs. |
| Formulation | Lyophilized from sterile PBS, 10% glycerol, 1mM DTT, pH 8.0 Normally 5% - 8% trehalose, mannitol and 0.01% Tween 80 are added as protectants before lyophilization. |
| Reconstitution | Please refer to the specific buffer information in the printed manual. Please refer to the printed manual for detailed information. |

Data



> 90 % as determined by reducing SDS-PAGE.

Background

UBE2M is a member of the ubiquitin-conjugating E2 family whose members perform the second step in the ubiquitination reaction. Initially identified as the main process for protein degradation; ubiquitination is believed nowadays to be crucial for a wider range of cellular processes. The outcome of the ubiquitin-conjugation reaction; and thereby the fate of the substrate; is heavily dependent on the number of ubiquitin molecules attached and how these ubiquitin molecules are inter-connected. To deal with this complexity and to allow adequate ubiquitination in time and space; a highly sophisticated conjugation machinery has been developed. In a sequential manner; ubiquitin becomes activated by an ubiquitin-activating enzyme (E1); which then transfers the ubiquitin to a group of ubiquitin-conjugating enzymes (E2s). Next; ubiquitin-loaded E2s are interacting with ubiquitin protein ligases (E3s) and ubiquitin is conjugated to substrates on recruitment by the E3. These three key enzymes are operating in a hierarchical system; wherein two E1s and 35 E2s have been found and hundreds of E3s have been identified in humans.

For Research Use Only

Toll-free: 1-888-852-8623
Web: www.elabscience.com

Tel: 1-832-243-6086
Email: techsupport@elabscience.com

Fax: 1-832-243-6017