

TEFM Polyclonal Antibody

catalog number: E-AB-62522

Note: Centrifuge before opening to ensure complete recovery of vial contents.

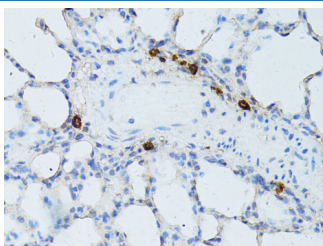
Description

| | |
|---------------------|--|
| Reactivity | Human;Mouse;Rat |
| Immunogen | Recombinant fusion protein of human TEFM (NP_078959.3). |
| Host | Rabbit |
| Isotype | IgG |
| Purification | Affinity purification |
| Buffer | Phosphate buffered solution, pH 7.4, containing 0.05% stabilizer and 50% glycerol. |

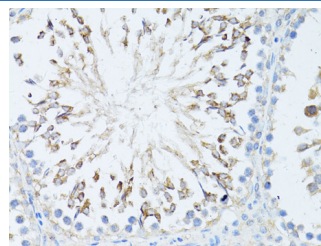
Applications Recommended Dilution

| | |
|------------|------------|
| IHC | 1:50-1:200 |
| IF | 1:50-1:200 |

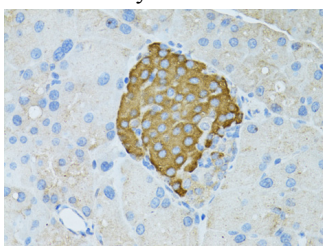
Data



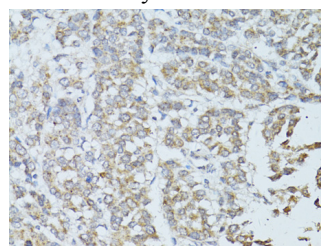
Immunohistochemistry of paraffin-embedded Rat lung using TEFM Polyclonal Antibody at dilution of 1:100 (40x lens).



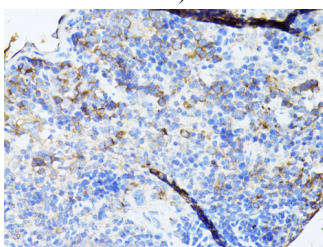
Immunohistochemistry of paraffin-embedded Rat testis using TEFM Polyclonal Antibody at dilution of 1:100 (40x lens).



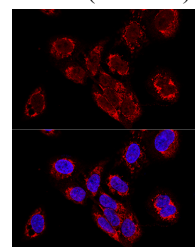
Immunohistochemistry of paraffin-embedded Rat pancreas using TEFM Polyclonal Antibody at dilution of 1:100 (40x lens).



Immunohistochemistry of paraffin-embedded Human colon carcinoma using TEFM Polyclonal Antibody at dilution of 1:100 (40x lens).



Immunohistochemistry of paraffin-embedded Mouse spleen using TEFM Polyclonal Antibody at dilution of 1:100 (40x lens).



Confocal immunofluorescence analysis of U2OS cells using TEFM Polyclonal Antibody at dilution of 1:100. Blue: DAPI for nuclear staining.

Preparation & Storage

Storage Store at -20°C Valid for 12 months. Avoid freeze / thaw cycles.

For Research Use Only

Shipping

The product is shipped with ice pack, upon receipt, store it immediately at the temperature recommended.

Background

TEFM (Transcription Elongation Factor, Mitochondrial) is a Protein Coding gene. Diseases associated with TEFM include Mitochondrial Dna Depletion Syndrome 8A and Mitochondrial Dna Depletion Syndrome 11. Gene Ontology (GO) annotations related to this gene include nucleic acid binding and crossover junction endodeoxyribonuclease activity.

For Research Use Only