

Recombinant Human LILRB2/CD85d Protein (His Tag)

Catalog Number: PKSH032698

Note: Centrifuge before opening to ensure complete recovery of vial contents.

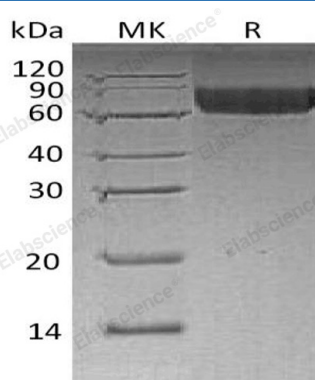
Description

| | |
|----------------------|--|
| Species | Human |
| Source | HEK293 Cells-derived Human LILRB2;CD85d protein Gln22-His458, with an C-terminal His |
| Calculated MW | 48.6 kDa |
| Observed MW | 58-75 kDa |
| Accession | AAH36827.1 |
| Bio-activity | Not validated for activity |

Properties

| | |
|-----------------------|--|
| Purity | > 95 % as determined by reducing SDS-PAGE. |
| Endotoxin | < 1.0 EU per µg of the protein as determined by the LAL method. |
| Storage | Generally, lyophilized proteins are stable for up to 12 months when stored at -20 to -80 °C. Reconstituted protein solution can be stored at 4-8°C for 2-7 days. Aliquots of reconstituted samples are stable at < -20°C for 3 months. |
| Shipping | This product is provided as lyophilized powder which is shipped with ice packs. |
| Formulation | Lyophilized from a 0.2 µm filtered solution of 20mM PB, 150mM NaCl, pH 7.2. Normally 5% - 8% trehalose, mannitol and 0.01% Tween 80 are added as protectants before lyophilization. |
| | Please refer to the specific buffer information in the printed manual. |
| Reconstitution | Please refer to the printed manual for detailed information. |

Data



> 95 % as determined by reducing SDS-PAGE.

Background

Members of the immunoglobulin-like transcript (ILT) family are activating and inhibitory immunoreceptors whose genes are located same locus that encodes killer cell Ig-like receptors (KIR). Leukocyte Immunoglobulin-Like Receptor Subfamily B Member 2 (LIR-2) is a type I transmembrane protein. LIR-2 is expressed primarily on monocytes and dendritic cells (DC). Human LIR-2 is produced as a 598 amino acid precursor including a 21 aa signal sequence, a 440 aa extracellular domain (ECD), a 21 aa transmembrane segment, and a 116 aa cytoplasmic domain. LIR-2 binds to Classical MHC I proteins. Ligation of LIR-2 includes Tyr phosphorylation within its cytoplasmic ITIMs, a requirement for association with SHP-1. LIR-2 mediates tolerogenic DC-induced CD4+ T cell energy in vitro and in vivo.

For Research Use Only