

SLC30A6 Polyclonal Antibody

catalog number: E-AB-53093

Note: Centrifuge before opening to ensure complete recovery of vial contents.

Description

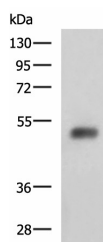
Reactivity	Human;Mouse
Immunogen	Fusion protein of human SLC30A6
Host	Rabbit
Isotype	IgG
Purification	Antigen affinity purification
Conjugation	Unconjugated
Buffer	Phosphate buffered solution, pH 7.4, containing 0.05% stabilizer and 50% glycerol.

Applications

Recommended Dilution

WB	1:1000-1:5000
IHC	1:50-1:200

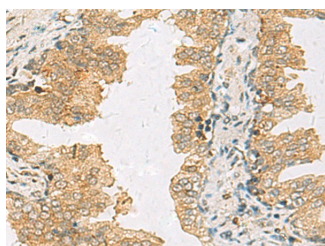
Data



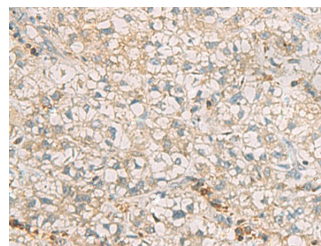
Western blot analysis of Human bladder transitional cell carcinoma grade 2-3 tissue lysate using SLC30A6 Polyclonal Antibody at dilution of 1:2000

Observed-MW:Refer to figures

Calculated-MW:51 kDa



Immunohistochemistry of paraffin-embedded Human prostate cancer tissue using SLC30A6 Polyclonal Antibody at dilution of 1:70 (×200)



Immunohistochemistry of paraffin-embedded Human liver cancer tissue using SLC30A6 Polyclonal Antibody at dilution of 1:70 (×200)

Preparation & Storage

Storage	Store at -20°C Valid for 12 months. Avoid freeze / thaw cycles.
Shipping	The product is shipped with ice pack, upon receipt, store it immediately at the temperature recommended.

Background

For Research Use Only

Zinc functions as a cofactor for numerous enzymes, nuclear factors, and hormones and as an intra- and intercellular signal ion. Members of the zinc transporter (ZNT)/SLC30 subfamily of the cation diffusion facilitator family, such as SLC30A6, permit cellular efflux of zinc.