

## Cystatin C Polyclonal Antibody(Capture/Detector)

**catalog number: AN000020P**

**Note:** Centrifuge before opening to ensure complete recovery of vial contents.

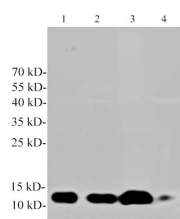
### Description

<b>Reactivity</b>	Human;Mouse;Rat
<b>Immunogen</b>	Recombinant Human Cystatin C protein expressed by E.coli
<b>Host</b>	Rabbit
<b>Isotype</b>	Rabbit IgG
<b>Purification</b>	Antigen Affinity Purification
<b>Buffer</b>	Phosphate buffered solution, pH 7.2, containing 0.05% Proclin300.

### Applications Recommended Dilution

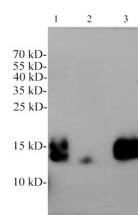
<b>WB</b>	1:1000-1:2000
<b>ELISA Capture</b>	2-8 µg/mL
<b>ELISA Detector</b>	0.1-0.4 µg/mL

### Data



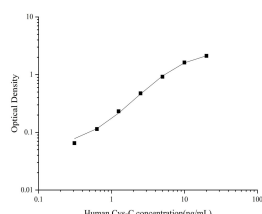
Western Blot with Cystatin C Polyclonal Antibody at dilution of 1:1000. Lane 1: HepG2 cell lysate, Lane 2: PC-3 cell lysate, Lane 3: CaCo2 cell lysate, Lane 4: Mouse kidney lysate.

**Observed-MW:13 kDa**  
**Calculated-MW:13 kDa**



Western Blot with Cystatin C Polyclonal Antibody at dilution of 1:1000. Lane 1: Rat kidney lysate, Lane 2: Rat liver lysate, Lane 3: Rat plasma.

**Observed-MW:13 kDa**  
**Calculated-MW:13 kDa**



Sandwich ELISA-Recombinant Human Cystatin C protein standard curve. Background subtracted standard curve using

Cystatin C antibody(AN000020P)(Capture), Cystatin C antibody(AN000020P)(Detector) in sandwich ELISA. The reference range value for Recombinant Human Cystatin C protein is 0.313-200 ng/mL.

### Preparation & Storage

**Storage** Store at 4°C valid for 12 months or -20°C valid for long term storage, avoid freeze / thaw cycles.

### For Research Use Only

**Shipping**

The product is shipped with ice pack, upon receipt, store it immediately at the temperature recommended.

**Background**

Cystatin C is a member of family 2 of the Cystatin superfamily . It is involved in processes such as tumor invasion and metastasis, inflammation and some neurological diseases. It inhibits many cysteine proteases such as papain and cathepsins B,H,K,L and S.

**For Research Use Only**

Toll-free: 1-888-852-8623

Web: [www.elabscience.com](http://www.elabscience.com)

Tel: 1-832-243-6086

Email: [techsupport@elabscience.com](mailto:techsupport@elabscience.com)

Fax: 1-832-243-6017

Rev. V1.9