

SLC25A12 Polyclonal Antibody

catalog number: **E-AB-13637**

Note: *Centrifuge before opening to ensure complete recovery of vial contents.*

Description

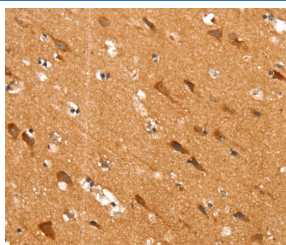
Reactivity	Human;Mouse
Immunogen	Synthetic peptide of human SLC25A 12
Host	Rabbit
Isotype	IgG
Purification	Affinity purification
Buffer	Phosphate buffered solution, pH 7.4, containing 0.05% stabilizer and 50% glycerol.

Applications

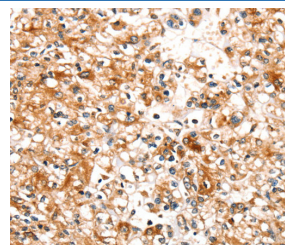
Recommended Dilution

IHC	1:25-1:100
------------	------------

Data



Immunohistochemistry of paraffin-embedded Human brain tissue using SLC25A12 Polyclonal Antibody at dilution 1:30



Immunohistochemistry of paraffin-embedded Human prostate cancer tissue using SLC25A12 Polyclonal Antibody at dilution 1:30

Preparation & Storage

Storage	Store at -20°C Valid for 12 months. Avoid freeze / thaw cycles.
Shipping	The product is shipped with ice pack,upon receipt,store it immediately at the temperature recommended.

Background

This gene encodes a calcium-binding mitochondrial carrier protein. The encoded protein localizes to the mitochondria and is involved in the exchange of aspartate for glutamate across the inner mitochondrial membrane. Polymorphisms in this gene may be associated with autism, and mutations in this gene may also be a cause of global cerebral hypomyelination. Alternatively spliced transcript variants have been observed for this gene.

For Research Use Only