

Recombinant Human Factor D Protein (His Tag)

Catalog Number: PKSH033442

Note: Centrifuge before opening to ensure complete recovery of vial contents.

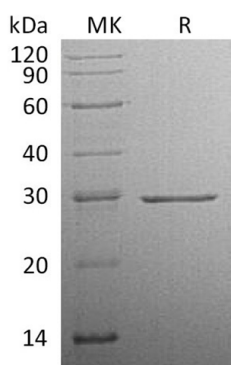
Description

Species	Human
Source	HEK293 Cells-derived Human Factor D protein Ile26-Ala253, with an C-terminal His
Calculated MW	25.8 kDa
Observed MW	28 kDa
Accession	P00746
Bio-activity	Not validated for activity

Properties

Purity	> 95 % as determined by reducing SDS-PAGE.
Concentration	Subject to label value.
Endotoxin	< 1.0 EU per µg of the protein as determined by the LAL method.
Storage	Store at < -20°C, stable for 6 months. Please minimize freeze-thaw cycles.
Shipping	This product is provided as liquid. It is shipped at frozen temperature with blue ice/ gel packs. Upon receipt, store it immediately at < - 20°C.
Formulation	Supplied as a 0.2 µm filtered solution of 20mM Tris-HCl, 500mM NaCl, 2mM CaCl ₂ , 5% Trehalose, 50% Glycerol, pH 8.5.

Data



> 95 % as determined by reducing SDS-PAGE.

Background

Complement factor D; also known as adipsin; is a member of the chymotrypsin family of serine proteases; which plays an essential role in host defense as the rate-limiting enzyme in the alternative pathway of complement activation. Complement factor D activates a convertase (C3bBb) responsible for cleavage of the complement protein C3; which leads to the activation of terminal complement component C5-9 to form the membrane attack complex on microbial or cellular surfaces. It also functions in the regulation of systemic energy balance and physiologic and pathologic processes; including immunity and inflammation.

For Research Use Only

Toll-free: 1-888-852-8623
Web: www.elabscience.com

Tel: 1-832-243-6086
Email: techsupport@elabscience.com

Fax: 1-832-243-6017