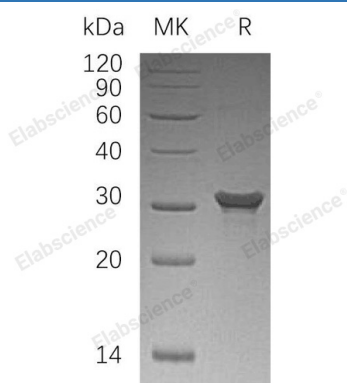


**Recombinant Human PAFAH1B2/PAFAHB Protein (His Tag)****Catalog Number: PKSH032847****Note:** Centrifuge before opening to ensure complete recovery of vial contents.**Description**

|                      |  |
|----------------------|--|
| <b>Species</b>       | Human  |
| <b>Source</b>        | E.coli-derived Human PAFAH1B2;PAFAHB protein Ser2-Ala229, with an C-terminal His |
| <b>Calculated MW</b> | 26.6 kDa   |
| <b>Observed MW</b>   | 31 kDa   |
| <b>Accession</b>     | P68402   |
| <b>Bio-activity</b>  | Not validated for activity   |

**Properties**

|                      |  |
|----------------------|--|
| <b>Purity</b>        | > 95 % as determined by reducing SDS-PAGE.   |
| <b>Concentration</b> | Subject to label value.  |
| <b>Endotoxin</b>     | < 1.0 EU per µg of the protein as determined by the LAL method.  |
| <b>Storage</b>       | Store at < -20°C, stable for 6 months. Please minimize freeze-thaw cycles.   |
| <b>Shipping</b>      | This product is provided as liquid. It is shipped at frozen temperature with blue ice/gel packs. Upon receipt, store it immediately at < - 20°C. |
| <b>Formulation</b>   | Supplied as a 0.2 µm filtered solution of 20mM Tris-HCl, 150mM NaCl, pH 8.0.   |

**Data**

&gt; 95 % as determined by reducing SDS-PAGE.

**Background**

Platelet-Activating Factor Acetylhydrolase IB Subunit  $\beta$  (PAFAHB) is a cytoplasmic hydrolase. PAFAHB is a member of the GDSL lipolytic enzyme family. It also belongs to Platelet-activating factor acetylhydrolase IB beta/gamma subunits subfamily. Cytosolic PAF-AH IB is formed of three subunits of 45 kDa (alpha), 30 kDa (beta) and 29 kDa (gamma), PAFAHB is a catalytic subunit. PAFAHB inactivates PAF by removing the acetyl group at the sn-2 position.