

DYNC1LI2 Polyclonal Antibody

Catalog Number: E-AB-92302

Note: Centrifuge before opening to ensure complete recovery of vial contents.

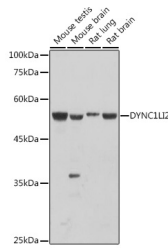
Description

Reactivity	Human, Mouse, Rat
Immunogen	Recombinant fusion protein of human DYNC1LI2
Host	Rabbit
Isotype	IgG
Purification	Affinity purification
Conjugation	Unconjugated
Formulation	PBS with 0.05% proclin300, 50% glycerol, pH7.3.

Applications Recommended Dilution

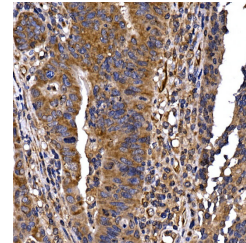
WB	1:500-1:2000
IHC	1:50-1:200

Data

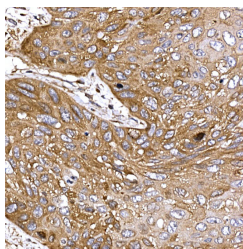


Western blot analysis of extracts of various cell lines using DYNC1LI2 Polyclonal Antibody at 1:1000 dilution.

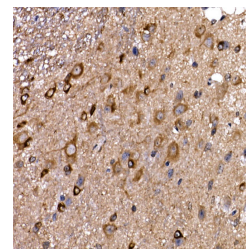
Observed Mw: 54kDa
Calculated Mw: 54kDa



Immunohistochemistry of paraffin-embedded human colon carcinoma using DYNC1LI2 Polyclonal Antibody at dilution of 1:20 (40x lens). Perform high pressure antigen retrieval with 10 mM citrate buffer pH 6.0 before commencing with IHC staining protocol.



Immunohistochemistry of paraffin-embedded human esophageal cancer using DYNC1LI2 Polyclonal Antibody at dilution of 1:20 (40x lens). Perform high pressure antigen retrieval with 10 mM citrate buffer pH 6.0 before commencing with IHC staining protocol.



Immunohistochemistry of paraffin-embedded mouse spinal cord using DYNC1LI2 Polyclonal Antibody at dilution of 1:20 (40x lens). Perform high pressure antigen retrieval with 10 mM citrate buffer pH 6.0 before commencing with IHC staining protocol.

For Research Use Only

A Reliable Research Partner in Life Science and Medicine

Toll-free: 1-888-852-8623

Tel: 1-832-243-6086

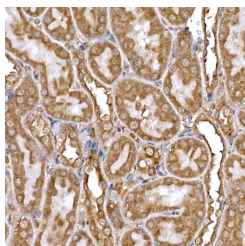
Fax: 1-832-243-6017

Web: www.elabscience.com

Email: techsupport@elabscience.com

DYNC1LI2 Polyclonal Antibody

Catalog Number: E-AB-92302



Immunohistochemistry of paraffin-embedded rat kidney using DYNC1LI2 Polyclonal Antibody at dilution of 1:20 (40x lens). Perform high pressure antigen retrieval with 10 mM citrate buffer pH 6.0 before commencing with IHC staining protocol.

Preparation & Storage

Storage Store at -20°C. Avoid freeze/thaw cycles.

Background

Cytoplasmic dynein is a microtubule-associated motor protein (Hughes et al., 1995 [PubMed 7738094]). See DYNC1H1 (MIM 600112) for general information about dyneins.

For Research Use Only

A Reliable Research Partner in Life Science and Medicine

Toll-free: 1-888-852-8623

Web: www.elabscience.com

Tel: 1-832-243-6086

Email: techsupport@elabscience.com

Fax: 1-832-243-6017