

C1orf146 Polyclonal Antibody

catalog number: **E-AB-92127**

Note: Centrifuge before opening to ensure complete recovery of vial contents.

Description

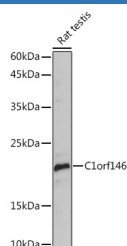
Reactivity	Mouse;Rat
Immunogen	Recombinant fusion protein of mouse C1orf146
Host	Rabbit
Isotype	IgG
Purification	Affinity purification
Buffer	Phosphate buffered solution, pH 7.4, containing 0.05% stabilizer and 50% glycerol.

Applications

Recommended Dilution

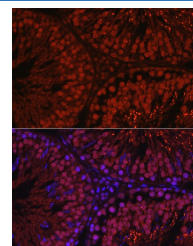
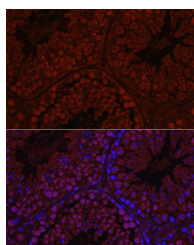
WB	1:500-1:2000
IF	1:50-1:200

Data

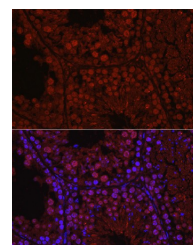


Western blot analysis of extracts of Rat testis using C1orf146 Polyclonal Antibody at 1:1000 dilution.

Observed-MW:20 kDa



Immunofluorescence analysis of rat testis using C1orf146 Polyclonal Antibody at dilution of 1:100 (40x lens). Blue: DAPI for nuclear staining.



Immunofluorescence analysis of Mouse testis using C1orf146 Polyclonal Antibody at dilution of 1:100 (40x lens). Blue: DAPI for nuclear staining.

Immunofluorescence analysis of mouse testis using C1orf146 Polyclonal Antibody at dilution of 1:100 (40x lens). Blue: DAPI for nuclear staining.

Preparation & Storage

Storage	Store at -20°C Valid for 12 months. Avoid freeze / thaw cycles.
Shipping	The product is shipped with ice pack, upon receipt, store it immediately at the temperature recommended.

Background

Plays a key role in reinforcing the integrity of the central element of the synaptonemal complex (SC) thereby stabilizing SC, ensuring progression of meiotic prophase I in male and female germ cells. Promotes homologous recombination and crossing-over in meiotic prophase I via its association with SHOC1. Required for the localization of TEX11 and MSH4 to recombination intermediates.

For Research Use Only