

# EEF2 Polyclonal Antibody

catalog number: D-AB-10182L

**Note:** Centrifuge before opening to ensure complete recovery of vial contents.

## Description

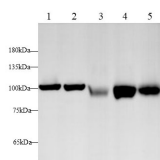
<b>Reactivity</b>	Human;Mouse;Rat
<b>Immunogen</b>	Recombinant Human EEF2 protein expressed by E.coli
<b>Host</b>	Rabbit
<b>Isotype</b>	IgG
<b>Purification</b>	Antigen Affinity Purification
<b>Conjugation</b>	Unconjugated
<b>buffer</b>	PBS with 0.05% proclin 300, 1% protective protein and 50% glycerol,pH7.4

## Applications

## Recommended Dilution

<b>WB</b>	1:500-1:1000
<b>IF</b>	1:50-1:200

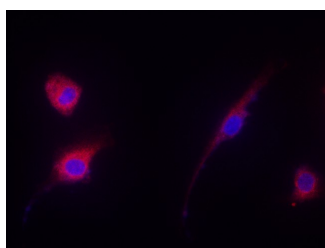
## Data



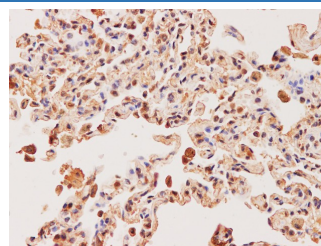
Western blot with EEF2 Polyclonal antibody at dilution of 1:500.lane 1:A431 whole cell lysate,lane 2:Hela whole cell lysate,lane 3:NIH/3T3 whole cell lysate,lane 4: C6 whole cell lysate,Lane 5:PC-12 whole cell lysate

**Observed-MV:100 kDa**

**Calculated-MV:95 kDa**



Immunofluorescence analysis of NIH/3T3 cells using EEF2 Polyclonal Antibody at dilution of 1:200



Immunohistochemistry of paraffin-embedded Human lung using EEF2 Polyclonal Antibody at dilution of 1:200

## Preparation & Storage

<b>Storage</b>	Store at -20°C Valid for 12 months. Avoid freeze / thaw cycles.
<b>Shipping</b>	The product is shipped with ice pack,upon receipt,store it immediately at the temperature recommended.

## Background

This gene encodes a member of the GTP-binding translation elongation factor family. This protein is an essential factor for protein synthesis. It promotes the GTP-dependent translocation of the nascent protein chain from the A-site to the P-site of the ribosome. This protein is completely inactivated by EF-2 kinase phosphorylation.

## For Research Use Only