

Recombinant LC3A Monoclonal Antibody

catalog number: **E-AB-81578**

Note: Centrifuge before opening to ensure complete recovery of vial contents.

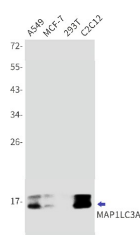
Description

Reactivity	Human;Mouse;Rat
Immunogen	A synthetic peptide of human MAP1LC3A
Host	Rabbit
Isotype	IgG
Clone	R05-1B6
Purification	Affinity Purified
Buffer	50mM Tris-Glycine(pH 7.4), 0.15M NaCl, 40% Glycerol, 0.05% stabilizer and 0.05% protective protein.

Applications Recommended Dilution

WB	1:500-1:1000
-----------	--------------

Data



Western blot detection of LC3A in A549, MCF-7, 293T, C2C12 cell lysates using LC3A Rabbit mAb(1:1000 diluted). Predicted band size: 14kDa. Observed band size: 16kDa.

Observed-MW:16 kDa

Calculated-MW:14 kDa

Preparation & Storage

Storage	Store at -20°C Valid for 12 months. Avoid freeze / thaw cycles.
Shipping	The product is shipped with ice pack, upon receipt, store it immediately at the temperature recommended.

Background

LC3, also known as microtubule-associated protein 1 light chain 3 (MAP1LC3), is a mammalian homolog of the yeast Atg8p (autophagy-related 8 protein) that is involved in autophagy process. Three isoforms of LC3 exist as LC3A, LC3B, and LC3C. LC3 is first synthesized as pro-LC3, and undergoes C-terminal cleavage to yield a cytosolic precursor known as LC3-I. During autophagy LC3-I is subsequently conjugated to PE lipid as lipidated form: LC3-II. The lipidated form migrates faster on SDS-PAGE gel. The increased level of LC3-II has been widely used as autophagy marker. This antibody recognizes both LC3-I and LC3-II.

For Research Use Only