

## Desmin Polyclonal Antibody

catalog number: E-AB-40571

**Note:** Centrifuge before opening to ensure complete recovery of vial contents.

### Description

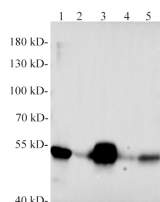
<b>Reactivity</b>	Mouse;Rat
<b>Immunogen</b>	Recombinant Human Desmin protein expressed by E.coli.
<b>Host</b>	Rabbit
<b>Isotype</b>	IgG
<b>Purification</b>	Antigen Affinity Purification
<b>Conjugation</b>	Unconjugated
<b>Buffer</b>	PBS with 0.05% Proclin300, 1% protective protein and 50% glycerol, pH7.4

### Applications

### Recommended Dilution

<b>WB</b>	1:500-2000
-----------	------------

### Data



Western blotting with anti-Desmin polyclonal Antibody at dilution of 1:1000. Lane 1: C2C12 cell lysates, lane 2: Mouse heart lysate, lane 3: Mouse skeletal muscle lysate, lane 4: Rat heart lysate, lane 5: Rat skeletal muscle lysate.

**Observed-MW:53 kDa**

**Calculated-MW:53 kDa**

### Preparation & Storage

<b>Storage</b>	Store at -20°C Valid for 12 months. Avoid freeze / thaw cycles.
<b>Shipping</b>	The product is shipped with ice pack, upon receipt, store it immediately at the temperature recommended.

### Background

Desmin is a 53 kDa, muscle-specific molecule that belongs to the intermediate filament superfamily of cytoskeletal proteins. Cytoplasmic Desmin homopolymers form stable filamentous networks that stabilize lateral alignments of myofibrils.