

HLA-DOB Polyclonal Antibody

catalog number: E-AB-18081

Note: Centrifuge before opening to ensure complete recovery of vial contents.

Description

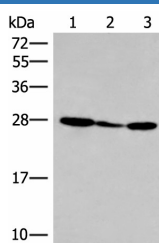
| | |
|---------------------|--|
| Reactivity | Human |
| Immunogen | Synthetic peptide of human HLA-DOB |
| Host | Rabbit |
| Isotype | IgG |
| Purification | Antigen affinity purification |
| Conjugation | Unconjugated |
| buffer | Phosphate buffered solution, pH 7.4, containing 0.05% stabilizer and 50% glycerol. |

Applications

Recommended Dilution

| | |
|------------|--------------|
| WB | 1:500-1:2000 |
| IHC | 1:30-1:150 |

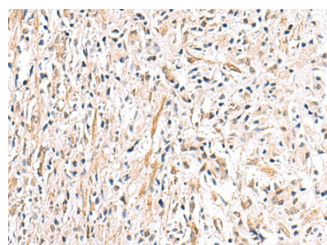
Data



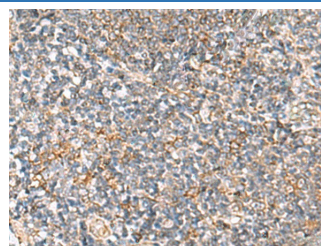
Western blot analysis of 293T cell lysate using HLA-DOB Polyclonal Antibody at dilution of 1:400

Observed-MV: Refer to figures

Calculated-MV: 31 kDa



Immunohistochemistry of paraffin-embedded Human prostate cancer tissue using HLA-DOB Polyclonal Antibody at dilution of 1:40 (x200)



Immunohistochemistry of paraffin-embedded Human tonsil tissue using HLA-DOB Polyclonal Antibody at dilution of 1:40 (x200)

Preparation & Storage

| | |
|-----------------|--|
| Storage | Store at -20°C Valid for 12 months. Avoid freeze / thaw cycles. |
| Shipping | The product is shipped with ice pack, upon receipt, store it immediately at the temperature recommended. |

Background

For Research Use Only

HLA-DOB Polyclonal Antibody

catalog number: E-AB-18081



HLA-DOB belongs to the HLA class II beta chain paralogues. This class II molecule is a heterodimer consisting of an alpha (DOA) and a beta chain (DOB), both anchored in the membrane. It is located in intracellular vesicles. DO suppresses peptide loading of MHC class II molecules by inhibiting HLA-DM. Class II molecules are expressed in antigen presenting cells (APC: B lymphocytes, dendritic cells, macrophages). The beta chain is approximately 26-28 kDa and its gene contains 6 exons. Exon one encodes the leader peptide, exons 2 and 3 encode the two extracellular domains, exon 4 encodes the transmembrane domain and exon 5 encodes the cytoplasmic tail. HLA-DOB (Major Histocompatibility Complex, Class II, DO Beta) is a Protein Coding gene. Among its related pathways are ICos-ICosL Pathway in T-Helper Cell and CTLA4 Signaling. GO annotations related to this gene include MHC class II protein complex binding and MHC class II receptor activity. An important paralog of this gene is HLA-DRB1.

For Research Use Only

A Reliable Research Partner in Life Science and Medicine
Tel: 400-999-2100

Email: techsupport@elabscience.cn

Web: www.elabscience.cn

Rev. V1.7