

TES Polyclonal Antibody

catalog number: E-AB-67822

Note: Centrifuge before opening to ensure complete recovery of vial contents.

Description

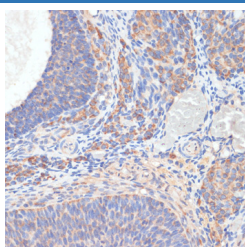
Reactivity	Human;Rat
Immunogen	Recombinant fusion protein of human TES (NP_056456.1).
Host	Rabbit
Isotype	IgG
Purification	Affinity purification
Buffer	Phosphate buffered solution, pH 7.4, containing 0.05% stabilizer and 50% glycerol.

Applications

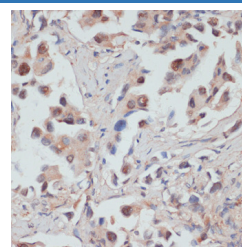
Recommended Dilution

IHC	1:50-1:200
------------	------------

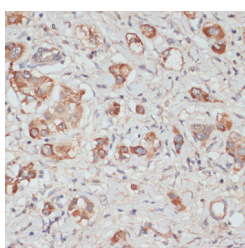
Data



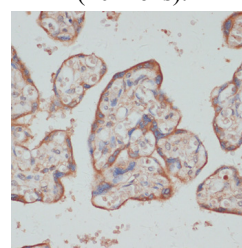
Immunohistochemistry of paraffin-embedded Rat ovary using TES Polyclonal Antibody at dilution of 1:100 (40x lens).



Immunohistochemistry of paraffin-embedded Human lung cancer using TES Polyclonal Antibody at dilution of 1:100 (40x lens).



Immunohistochemistry of paraffin-embedded Human liver cancer using TES Polyclonal Antibody at dilution of 1:100 (40x lens).



Immunohistochemistry of paraffin-embedded Human placenta using TES Polyclonal Antibody at dilution of 1:100 (40x lens).

Preparation & Storage

Storage	Store at -20°C Valid for 12 months. Avoid freeze / thaw cycles.
Shipping	The product is shipped with ice pack, upon receipt, store it immediately at the temperature recommended.

Background

For Research Use Only

Cancer-associated chromosomal changes often involve regions containing fragile sites. This gene maps to a common fragile site on chromosome 7q31.2 designated FRA7G. This gene is similar to mouse Testin, a testosterone-responsive gene encoding a Sertoli cell secretory protein containing three LIM domains. LIM domains are double zinc-finger motifs that mediate protein-protein interactions between transcription factors, cytoskeletal proteins and signaling proteins. This protein is a negative regulator of cell growth and may act as a tumor suppressor. This scaffold protein may also play a role in cell adhesion, cell spreading and in the reorganization of the actin cytoskeleton. Multiple protein isoforms are encoded by transcript variants of this gene.

For Research Use Only

Toll-free: 1-888-852-8623
Web: www.elabscience.com

Tel: 1-832-243-6086
Email: techsupport@elabscience.com

Fax: 1-832-243-6017

Rev. V1.6