

Elab Fluor® Violet 500 Anti-Mouse MHC II Antibody[M5/114]

Catalog Number: E-AB-F0990R

Note: Centrifuge before opening to ensure complete recovery of vial contents.

Description

Reactivity	Mouse
Host	Rat
Isotype	Rat IgG2b, κ
Clone No.	M5/114
Isotype Control	Elab Fluor® Violet 500 Rat IgG2b, κ Isotype Control[LTF-2] [Product E-AB-F09842R]
Conjugation	Elab Fluor® Violet 500
Conjugation Information	Elab Fluor® Violet 500 is designed to be excited by the violet laser (405 nm) and detected using an optical filter centered near 501 nm (e.g., a 525/45 nm bandpass filter).
Storage Buffer	Phosphate buffered solution, pH 7.2, containing 0.09% sodium azide and 1% BSA.

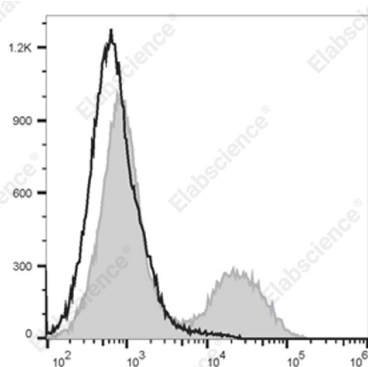
Applications

Recommended usage

FCM

Each lot of this antibody is quality control tested by flow cytometric analysis. **The amount of the reagent is suggested to be used 5 μL of antibody per test (million cells in 100 μL staining volume or per 100 μL of whole blood).** Please check your vial before the experiment. Since applications vary, the appropriate dilutions must be determined for individual use.

Data



Staining of C57BL/6 murine splenocytes with Elab Fluor® Violet 500 Anti-Mouse MHC II (I-A/I-E) Antibody[M5/114]

(filled gray histogram) or Elab Fluor® Violet 500 Rat IgG2b, κ Isotype Control (empty black histogram). Total viable cells were used for analysis.

Preparation & Storage

Storage	Keep as concentrated solution. This product can be stored at 2-8°C for 12 months. Please protected from prolonged exposure to light and do not freeze.
Shipping	Ice bag

Antigen Information

Alternate Names	H2-Ab1/Eb1;I-E beta MHC class II;MHC class II;MHC class II H2-IA-beta-psi;Major histocompatibility protein class II beta chain
Uniprot ID	P14483;O78196;

For Research Use Only

Gene ID

14961,14969

Background

These class II molecules are expressed on antigen presenting cells (including B cells) and a subset of T cells from H-2b,d,q,r bearing mice and are involved in antigen presentation to T cells expressing CD3/TCR and CD4 proteins.