

Elab Fluor® 488 Anti-Mouse CD25 Antibody[PC-61.5.3]

Catalog Number: E-AB-F1102L

Note: Centrifuge before opening to ensure complete recovery of vial contents.

Description

Reactivity	Mouse
Host	Rat
Isotype	Rat IgG1, κ
Clone No.	PC-61.5.3
Isotype Control	Elab Fluor® 488 Rat IgG1, κ Isotype Control[HRPN] [Product E-AB-F09822L]
Conjugation	Elab Fluor® 488
Conjugation Information	Elab Fluor® 488 is designed to be excited by the Blue laser (488 nm) and detected using an optical filter centered near 520 nm (e.g., a 525/40 nm bandpass filter).
Storage Buffer	Phosphate buffered solution, pH 7.2, containing 0.09% stabilizer and 1% protein protectant.

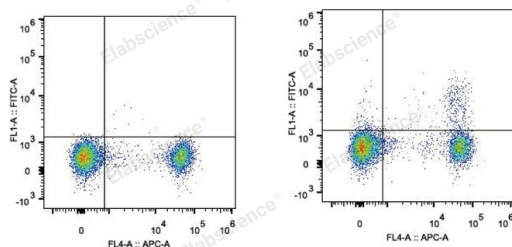
Applications

Recommended usage

FCM

Each lot of this antibody is quality control tested by flow cytometric analysis. **The amount of the reagent is suggested to be used 5 μ L of antibody per test (million cells in 100 μ L staining volume or per 100 μ L of whole blood).** Please check your vial before the experiment. Since applications vary, the appropriate dilutions must be determined for individual use.

Data



C57BL/6 murine splenocytes are stained with Elab Fluor® 488 Anti-Mouse CD25 Antibody and APC Anti-Mouse CD4 Antibody (Right). Splenocytes stained with APC Anti-Mouse CD4 Antibody (Left) are used as control.

Preparation & Storage

Storage	Keep as concentrated solution. This product can be stored at 2-8°C for 12 months. Please protected from prolonged exposure to light and do not freeze.
Shipping	Ice bag

Antigen Information

Alternate Names	IL-2 receptor subunit alpha;IL-2-RA;IL-2R subunit alpha;IL2-RA;IL2RA;Interleukin-2 receptor subunit alpha;TAC antigen;p55
Uniprot ID	P01590

For Research Use Only

Toll-free: 1-888-852-8623
Web: www.elabscience.com

Tel: 1-832-243-6086
Email: techsupport@elabscience.com

Fax: 1-832-243-6017

Rev. V1.6

Gene ID

16184

Background

CD25 is a 55 kD glycoprotein, also known as the low affinity IL-2R α , Ly-43, p55, or Tac. It is expressed on activated T and B cells, thymocyte subset, pre-B cells, and T regulatory cells. In association with CD122 (IL-2R β) and CD132 (common γ chain), CD25 forms the high affinity signaling IL-2 receptor.

For Research Use Only

Toll-free: 1-888-852-8623
Web: www.elabscience.com

Tel: 1-832-243-6086
Email: techsupport@elabscience.com

Fax: 1-832-243-6017

Rev. V1.6