

Recombinant Inhibin alpha Monoclonal Antibody

catalog number: **AN301567L**

Note: Centrifuge before opening to ensure complete recovery of vial contents.

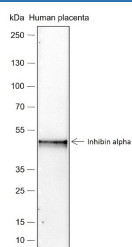
Description

Reactivity	Human;
Immunogen	Recombinant human Inhibin alpha fragment
Host	Rabbit
Isotype	IgG, κ
Clone	A266
Purification	Protein A purified
Buffer	PBS, 50% glycerol, 0.05% Proclin 300, 0.05% protein protectant.

Applications Recommended Dilution

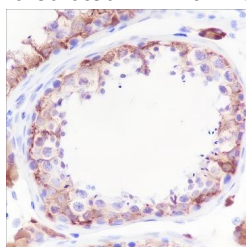
WB	1:500-1:1000
IHC	1:200-1:1000
IF	1:50
FCM	1:50-1:100

Data

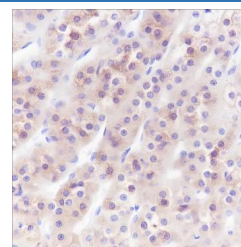


Western Blot with Inhibin alpha Monoclonal Antibody at dilution of 1:1000. Lane 1: Human placenta

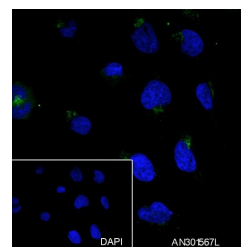
Observed-MW:40 kDa
Calculated-MW:40 kDa



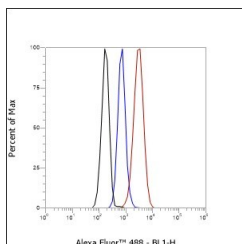
Immunohistochemistry of paraffin-embedded Human testis using Inhibin alpha Monoclonal Antibody at dilution of 1:1000.



Immunohistochemistry of paraffin-embedded Human adrenal gland using Inhibin alpha Monoclonal Antibody at dilution of 1:1000.



Immunofluorescent analysis of (4% Paraformaldehyde) fixed HeLa cells using anti-Inhibin alpha Monoclonal Antibody at dilution of 1:50.



For Research Use Only

Toll-free: 1-888-852-8623
Web: www.elabscience.com

Tel: 1-832-243-6086
Email: techsupport@elabscience.com

Fax: 1-832-243-6017

Rev. V1.0

Flow cytometric analysis of human Inhibin alpha expression on HeLa cells. Cells were stained with purified anti-Human Inhibin alpha, then a Alexa Fluor 488-conjugated second step antibody. The histogram were derived from events with the forward and side light-scatter characteristics of intact cells.

Preparation & Storage

Storage Store at -20°C Valid for 12 months. Avoid freeze / thaw cycles.

Shipping Ice bag

Background

Inhibins and activins inhibit and activate, respectively, the secretion of follitropin by the pituitary gland. Inhibins/activins are involved in regulating a number of diverse functions such as hypothalamic and pituitary hormone secretion, gonadal hormone secretion, germ cell development and maturation, erythroid differentiation, insulin secretion, nerve cell survival, embryonic axial development or bone growth, depending on their subunit composition.

For Research Use Only