

## Recombinant TROP2/TACSTD2 Monoclonal Antibody

catalog number: **AN300335P**

**Note:** Centrifuge before opening to ensure complete recovery of vial contents.

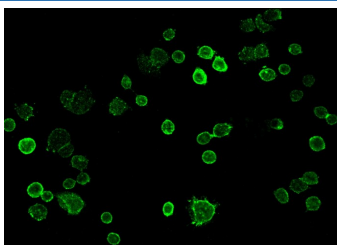
### Description

<b>Reactivity</b>	Human
<b>Immunogen</b>	Recombinant Human TROP2/TACSTD2 Protein
<b>Host</b>	Rabbit
<b>Isotype</b>	IgG
<b>Clone</b>	2C5
<b>Purification</b>	Protein A
<b>Buffer</b>	0.2 µm filtered solution in PBS

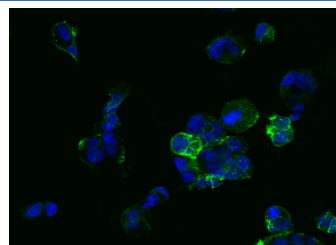
### Applications Recommended Dilution

<b>ICC/IF</b>	1:20-1:100
---------------	------------

### Data



Immunofluorescence analysis of TROP2 in SKBR3 cells. Cells were fixed with 4% PFA, blocked with 10% serum, and incubated with rabbit anti-human TROP2 monoclonal antibody (dilution ratio 1:60) at 4°C overnight. Then cells were stained with the Alexa Fluor®488-conjugated Goat Anti-rabbit IgG secondary antibody (green). Positive staining was localized to.



Immunofluorescence analysis of TROP-2 in NCI-N87 cells. Cells were fixed with 4% PFA, blocked with 10% serum, and incubated with rabbit anti-Human TROP-2 monoclonal antibody (dilution ratio 1:60) at 4°C overnight. Then cells were stained with the Alexa Fluor®488-conjugated Goat Anti-rabbit IgG secondary antibody (green) and counterstained with DAPI (blue). Positive staining was localized to Cell membrane.

### Preparation & Storage

<b>Storage</b>	This antibody can be stored at 2°C-8°C for one month without detectable loss of activity. Antibody products are stable for twelve months from date of receipt when stored at -20°C to -80°C. Preservative-Free. Avoid repeated freeze-thaw cycles.
<b>Shipping</b>	Ice bag

### Background

This intronless gene encodes a carcinoma-associated antigen. This antigen is a cell surface receptor that transduces calcium signals. Mutations of this gene have been associated with gelatinous drop-like corneal dystrophy.

### For Research Use Only