

Recombinant Human Caspase-10/CASP10 Protein (His Tag)



Catalog Number:PKSH032176

Note: Centrifuge before opening to ensure complete recovery of vial contents.

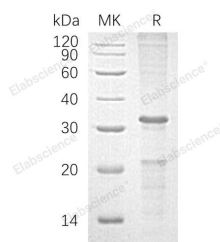
Description

Synonyms	Caspase-10;CASP-10;Apoptotic Protease Mch-4;FAS-Associated Death Domain Protein Interleukin-1B-Converting Enzyme 2;FLICE2;ICE-Like Apoptotic Protease 4;CASP10;MCH4
Species	Human
Expression Host	E.coli
Sequence	Val220-Ile480
Accession	Q92851-4
Calculated Molecular Weight	30.1 kDa
Observed molecular weight	33 kDa
Tag	C-His

Properties

Purity	> 70 % as determined by reducing SDS-PAGE.
Endotoxin	< 1.0 EU per µg of the protein as determined by the LAL method.
Storage	Store at < -20°C, stable for 6 months. Please minimize freeze-thaw cycles.
Shipping	This product is provided as liquid. It is shipped at frozen temperature with blue ice/gel packs. Upon receipt, store it immediately at < - 20°C.
Formulation	Supplied as a 0.2 µm filtered solution of 20mM Tris-HCl, 8% Sucrose, 1mM DTT, 0.05% Tween80, pH8.5.
Reconstitution	Not Applicable

Data



> 70 % as determined by reducing SDS-PAGE.

Background

Caspase-10 (CASP10) is a 521 amino acid protein member of the Cysteine-Aspartic Acid Protease (Caspase) family. CASP10 contains two DED (Death Effector) domains and is detectable in most tissues. CASP10 cleavage by Granzyme B and autocatalytic activity generate the two active subunits: Caspase-10 subunit p23/17, Caspase-10 subunit p12. Caspases are a family of cytosolic aspartate-specific cysteine proteases involved in the execution-phase of cell apoptosis, the initiation and execution. Human caspases can be subdivided into three functional groups: cytokine activation (caspase-1, -4, -5, and -13), apoptosis initiation (caspase-2, -8, -9, and -10), and apoptosis execution (caspase-3, -6, and -7). CASP10 cleaves and activates caspases 3 and 7, but itself is processed by caspase 8. Defects in CASP10 are associated with apoptosis defects seen in type II autoimmune lymphoproliferative syndrome.

For Research Use Only

A Reliable Research Partner in Life Science and Medicine

Toll-free: 1-888-852-8623

Web: www.elabscience.com

Tel: 1-832-243-6086

Email: techsupport@elabscience.com

Fax: 1-832-243-6017