

## CSK Polyclonal Antibody

catalog number: **E-AB-91633**

**Note:** Centrifuge before opening to ensure complete recovery of vial contents.

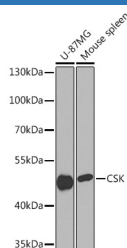
### Description

<b>Reactivity</b>	Human;Mouse;Rat
<b>Immunogen</b>	Recombinant fusion protein of human CSK
<b>Host</b>	Rabbit
<b>Isotype</b>	IgG
<b>Purification</b>	Affinity purification
<b>Buffer</b>	Phosphate buffered solution, pH 7.4, containing 0.05% stabilizer and 50% glycerol.

### Applications

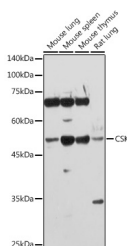
Applications	Recommended Dilution
<b>WB</b>	1:500-1:2000
<b>IHC</b>	1:50-1:200
<b>IF</b>	1:50-1:200

### Data



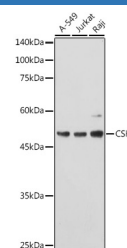
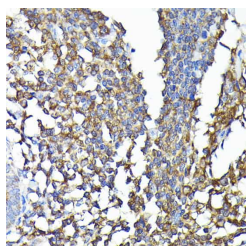
Western blot analysis of extracts of various cell lines using CSK Polyclonal Antibody at 1:1000 dilution.

**Observed-MW:50 kDa**  
**Calculated-MW:50 kDa**



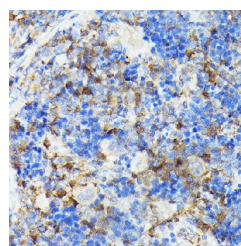
Western blot analysis of extracts of various cell lines using CSK Polyclonal Antibody at 1:1000 dilution.

**Observed-MW:50 kDa**  
**Calculated-MW:50 kDa**

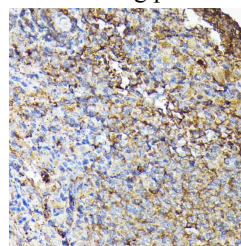


Western blot analysis of extracts of various cell lines using CSK Polyclonal Antibody at 1:1000 dilution.

**Observed-MW:50 kDa**  
**Calculated-MW:50 kDa**

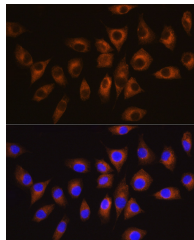


Immunohistochemistry of paraffin-embedded rat spleen using [KO Validated] CSK Polyclonal Antibody at dilution of 1:100 (40x lens). Perform high pressure antigen retrieval with 10 mM citrate buffer pH 6.0 before commencing with IHC staining protocol.



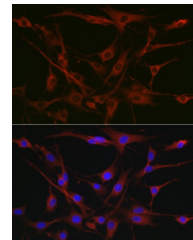
### For Research Use Only

Immunohistochemistry of paraffin-embedded human colon carcinoma using [KO Validated] CSK Polyclonal Antibody at dilution of 1:100 (40x lens). Perform high pressure antigen retrieval with 10 mM citrate buffer pH 6.0 before commencing with IHC staining protocol.



Immunofluorescence analysis of L929 cells using CSK Polyclonal Antibody at dilution of 1:100 (40x lens). Blue: DAPI for nuclear staining.

Immunohistochemistry of paraffin-embedded mouse spleen using [KO Validated] CSK Polyclonal Antibody at dilution of 1:100 (40x lens). Perform high pressure antigen retrieval with 10 mM citrate buffer pH 6.0 before commencing with IHC staining protocol.



Immunofluorescence analysis of C6 cells using [KO Validated] CSK Polyclonal Antibody at dilution of 1:100 (40x lens). Blue: DAPI for nuclear staining.

### Preparation & Storage

#### Storage

Store at -20°C Valid for 12 months. Avoid freeze / thaw cycles.

#### Shipping

The product is shipped with ice pack, upon receipt, store it immediately at the temperature recommended.

### Background

Non-receptor tyrosine-protein kinase that plays an important role in the regulation of cell growth, differentiation, migration and immune response. Phosphorylates tyrosine residues located in the C-terminal tails of Src-family kinases (SFKs including LCK, SRC, HCK, FYN, LYN, CSK or YES1. Upon tail phosphorylation, Src-family members engage in intramolecular interactions between the phosphotyrosine tail and the SH2 domain that result in an inactive conformation. To inhibit SFKs, CSK is recruited to the plasma membrane via binding to transmembrane proteins or adapter proteins located near the plasma membrane. Suppresses signaling by various surface receptors, including T-cell receptor (TCR and B-cell receptor (BCR by phosphorylating and maintaining inactive several positive effectors such as FYN or LCK.

### For Research Use Only