

B7-1/CD80 Polyclonal Antibody(Capture/Detector)

catalog number: AN002370P

Note: Centrifuge before opening to ensure complete recovery of vial contents.

Description

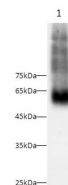
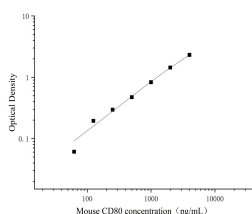
| | |
|---------------------|--|
| Reactivity | Mouse |
| Immunogen | Recombinant Mouse B7-1/CD80 protein expressed by Mammalian |
| Host | Rabbit |
| Isotype | Rabbit IgG |
| Purification | Antigen Affinity Purification |
| Conjugation | Unconjugated |
| buffer | Phosphate buffered solution, pH 7.2, containing 0.05% proclin 300. |

Applications

Recommended Dilution

| | |
|-----------------------|---------------|
| ELISA Capture | 2-8 µg/mL |
| ELISA Detector | 0.1-0.4 µg/mL |
| WB | 1:500-1:1000 |

Data



Sandwich ELISA-Recombinant Mouse B7-1/CD80 protein standard curve. Background subtracted standard curve using B7-1/CD80 antibody(AN002370P)(Capture), B7-1/CD80 antibody(AN002370P)(Detector) in sandwich ELISA. The reference range value for Recombinant Mouse B7-1/CD80 protein is 62.5-4000 pg/mL.

Western Blot with Anti B7-1/CD80 Polyclonal antibody at dilution of 1:1000. Lane 1: C2C12 cell lysate.

Observed-MV:50-65 kDa

Calculated-MV:35 kDa

Preparation & Storage

| | |
|-----------------|--|
| Storage | Store at 4°C valid for 12 months or -20°C valid for long term storage, avoid freeze / thaw cycles. |
| Shipping | The product is shipped with ice pack, upon receipt, store it immediately at the temperature recommended. |

Background

The protein encoded by this gene is a membrane receptor that is activated by the binding of CD28 or CTLA-4. The activated protein induces T-cell proliferation and cytokine production. This protein can act as a receptor for adenovirus subgroup B and may play a role in lupus neuropathy.

For Research Use Only