

PE Anti-Mouse CD23 Antibody[B3B4]

Catalog Number: E-AB-F1178UD

Note: Centrifuge before opening to ensure complete recovery of vial contents.

Description

Reactivity	Mouse
Host	Rat
Isotype	Rat IgG2a, κ
Clone No.	B3B4
Isotype Control	PE Rat IgG2a, κ Isotype Control[2A3] [Product E-AB-F09833D]
Conjugation	PE
Conjugation Information	PE is designed to be excited by the Blue (488 nm), Green (532 nm) and Yellow-Green (561 nm) lasers and detected using an optical filter centered near 575 nm (e.g., a 585/42 nm bandpass filter).
Storage Buffer	Phosphate buffered solution, pH 7.2, containing 0.09% sodium azide and 1% BSA.

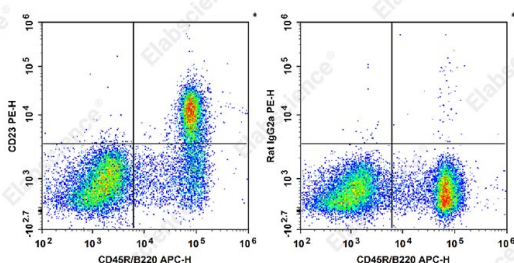
Applications

FCM

Recommended usage

Each lot of this antibody is quality control tested by flow cytometric analysis. Please check your vial before the experiment. Since applications vary, the appropriate dilutions must be determined for individual use. We suggest each investigator should titrate the reagent to obtain optimal results [The recommended concentration is 0.1-1 $\mu\text{g}/10^6$ cells in 100 μL volume].

Data



C57BL/6 murine splenocytes are stained with APC Anti-Mouse CD45R/B220 Antibody and PE Anti-Mouse CD23 Antibody[B3B4] (Left). Splenocytes are stained with APC Anti-Mouse CD45R/B220 Antibody and PE Rat IgG2a, κ Isotype Control[2A3] (Right).

Preparation & Storage

Storage	Keep as concentrated solution. This product can be stored at 2-8°C for 12 months. Please protected from prolonged exposure to light and do not freeze.
Shipping	Ice bag

Antigen Information

Alternate Names	Fc-epsilon-RIIFcer2;Fcer2a;Lymphocyte IgE receptor
Uniprot ID	P20693

For Research Use Only

Gene ID

14128

Background

CD23 is a 45 kD protein also known as low affinity IgE Fc receptor, FcεRII, BLAST-2, Ly-42, or B6. It is a member of the Ig family, expressed on conventional B (but not B-1) cells and follicular dendritic cells. CD23 responds to high levels of IgE by downregulating IgE secretion.