

Recombinant Human APE1/APE Protein (His Tag)

Catalog Number:PKSH030851



Note: Centrifuge before opening to ensure complete recovery of vial contents.

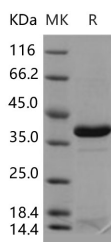
Description

Synonyms	DNA-(Apurinic or Apyrimidinic Site) Lyase;APEX Nuclease;APEN;Apurinic-Apyrimidinic Endonuclease 1;AP Endonuclease 1;APE-1REF-1;Redox Factor-1;APEX1;APE;APE1;APEX;APX;HAP1;REF1
Species	Human
Expression Host	E.coli
Sequence	Pro2-Leu 318
Accession	P27695
Calculated Molecular Weight	37.0 kDa
Observed molecular weight	37 kDa
Tag	N-His

Properties

Purity	> 92 % as determined by reducing SDS-PAGE.
Endotoxin	< 1.0 EU per µg of the protein as determined by the LAL method.
Storage	Generally, lyophilized proteins are stable for up to 12 months when stored at -20 to -80°C. Reconstituted protein solution can be stored at 4-8°C for 2-7 days. Aliquots of reconstituted samples are stable at < -20°C for 3 months.
Shipping	This product is provided as lyophilized powder which is shipped with ice packs.
Formulation	Lyophilized from sterile PBS, pH 7.5 Normally 5 % - 8 % trehalose, mannitol and 0.01 % Tween80 are added as protectants before lyophilization. Please refer to the specific buffer information in the printed manual.
Reconstitution	Please refer to the printed manual for detailed information.

Data



> 92 % as determined by reducing SDS-PAGE.

Background

The enzyme is known to be a redox factor (Ref-1) stimulating DNA binding activity of AP-1 binding proteins such as Fos and Jun as well as a multifunctional DNA repair enzyme having 5' AP endonuclease; DNA 3' repair diesterase; 3'-5' exonuclease and DNA 3'-phosphatase activities. Although Apex mRNA was expressed ubiquitously; the levels varied significantly; suggesting organ- or tissue-specific expression of the Apex gene. The highest level was observed in the testis; relatively high levels in the thymus; spleen; kidney and brain; and the lowest level in the liver in rats. However; the present results suggested that APEX/Ref-1 gene product can interact with AP-1 binding proteins in brain; especially in the

For Research Use Only

A Reliable Research Partner in Life Science and Medicine

Toll-free: 1-888-852-8623

Web: www.elabscience.com

Tel: 1-832-243-6086

Email: techsupport@elabscience.com

Fax: 1-832-243-6017

Recombinant Human APE1/APE Protein (His Tag)

Catalog Number:PKSH030851



hippocampal formation; to regulate some brain functions by redox-activation.

For Research Use Only

A Reliable Research Partner in Life Science and Medicine

Toll-free: 1-888-852-8623

Web: www.elabscience.com

Tel: 1-832-243-6086

Email: techsupport@elabscience.com

Fax: 1-832-243-6017