

Recombinant Human PPlase/PPIL1 Protein (His Tag)

Catalog Number: PKS033304

Note: Centrifuge before opening to ensure complete recovery of vial contents.

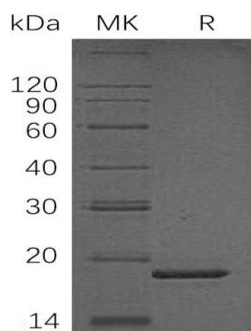
Description

Species	Human
Source	E.coli-derived Human PPlase/PPIL1 protein Met 1-Gly166, with an N-terminal His
Calculated MW	20.4 kDa
Observed MW	19 kDa
Accession	Q9Y3C6
Bio-activity	Not validated for activity

Properties

Purity	> 90 % as determined by reducing SDS-PAGE.
Concentration	Subject to label value.
Endotoxin	< 1.0 EU per µg of the protein as determined by the LAL method.
Storage	Store at < -20°C, stable for 6 months. Please minimize freeze-thaw cycles.
Shipping	This product is provided as liquid. It is shipped at frozen temperature with blue ice/ gel packs. Upon receipt, store it immediately at < - 20°C.
Formulation	Supplied as a 0.2 µm filtered solution of 20mM Tris-HCl, pH 8.0.

Data



> 90 % as determined by reducing SDS-PAGE.

Background

Peptidyl-Prolyl Cis-Trans Isomerase-Like 1 (PPlase) belongs to the cyclophilin-type PPlase family. PPlases can accelerate the folding of proteins and catalyze the cis-trans isomerization of proline imidic peptide bonds in oligopeptides. PPlase is a ubiquitous protein and has highly expression in heart ;skeletal and muscle. PPlase contains a PPlase cyclophilin-type domain and four Cyclosporin A binding regions. PPlase might play an important role in proliferation of cancer cells through modulation of phosphorylation of stathmin. It is suggested that PPlase can act as as a novel molecular target for colon-cancer therapy.

For Research Use Only