

# RHBDL2 Polyclonal Antibody

catalog number: E-AB-53024

**Note:** Centrifuge before opening to ensure complete recovery of vial contents.

## Description

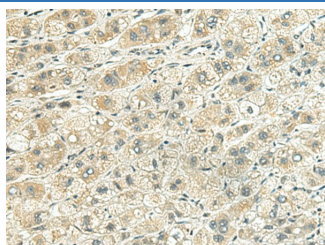
<b>Reactivity</b>	Human
<b>Immunogen</b>	Fusion protein of human RHBDL2
<b>Host</b>	Rabbit
<b>Isotype</b>	IgG
<b>Purification</b>	Antigen affinity purification
<b>Conjugation</b>	Unconjugated
<b>buffer</b>	Phosphate buffered solution, pH 7.4, containing 0.05% stabilizer and 50% glycerol.

## Applications

## Recommended Dilution

<b>IHC</b>	1:100-1:300
------------	-------------

## Data



Immunohistochemistry of paraffin-embedded Human liver cancer tissue using RHBDL2 Polyclonal Antibody at dilution of 1:140( $\times 200$ )

## Preparation & Storage

<b>Storage</b>	Store at -20°C Valid for 12 months. Avoid freeze / thaw cycles.
<b>Shipping</b>	The product is shipped with ice pack, upon receipt, store it immediately at the temperature recommended.

## Background

The protein encoded by this gene is a member of the rhomboid family of integral membrane proteins. This family contains proteins that are related to *Drosophila* rhomboid protein. Members of this family are found in both prokaryotes and eukaryotes and are thought to function as intramembrane serine proteases. The encoded protein is thought to release soluble growth factors by proteolytic cleavage of certain membrane-bound substrates, including ephrin B2 and ephrin B3. Two transcript variants encoding different isoforms have been found for this gene.

## For Research Use Only